

The 2nd Joint Korea-Japan Public Opinion Poll (2014) Comparative Data



The Genron NPO



East Asia Institute

In Cooperation with

Japan: Public Opinion Research Institute Corporation
South Korea: Hankook Research Co. Ltd

South Korea-Japan Mutual Public Perception Survey Outline

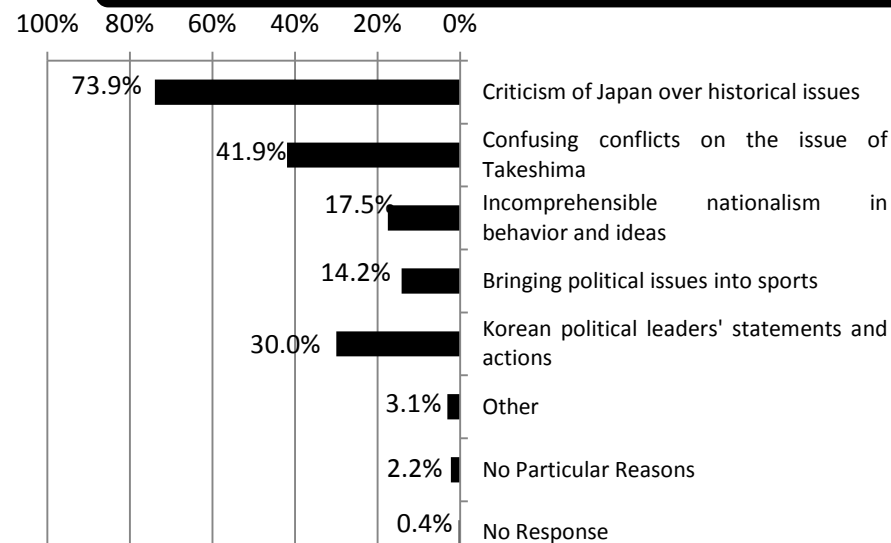
	Japanese Public Opinion Poll	South Korean Public Opinion Poll
Survey Location	Japan	South Korea
Survey Population	Adult men/women over the age of 18 (excluding high school students)	Male/Female over the age of 19
Respondent Selection Method	50 Locations throughout Japan. 20 Surveys per location. Survey allocated according to gender and age group ratio.	Divided to metropolitan areas by 16 administrative districts. Survey allocated proportionally according to area population. Respondents determined by area's gender and age group ratio.
Survey Method	Door-to-door home visit method	Face-to-face interviewing
Survey Date	May 31, 2014 – June 22, 2014	June 10, 2014 – June 26, 2014
Valid Responses	1000	1004
Respondents' Characteristics	Male 48.2%、Female 51.8%	Male 49.2%、Female 50.8%
	Elementary/Middle School : 12.4% High School Certificate : 48.4% junior college/technical college certificate : 19.3% Bachelor's Degree : 17.3% Master's Degree or higher : 1.2% Other : 0.4% No Response : 1.0%	Less than elementary school certificate : 8.9% Middle School Certificate: 7.3% High School Certificate : 34.4% University/college student (currently studying or quit school) : 15.2% Bachelor's Degree : 31.8% Master's Degree or Higher : 2.5%
	20 years or less : 2.2% 20 ~ 29 Years : 12.9% 30 ~ 39 Years : 15.5% 40 ~ 49 Years : 16.8% 50 ~ 59 Years : 14.4% 60 years or more : 38.2%	19 ~ 29 Years : 17.9% 30 ~ 39 Years : 19.5% 40 ~ 49 Years : 21.8% 50 ~ 59 Years : 19.5% 60 years or more : 21.2%
<p>[Japanese Intellectuals Survey] Sample Size = 633</p> <p>Among Genron NPO's database of 2000 registered intellectuals and politics related society members, 633 responded to the questionnaire sent via email between beginning-mid June. The respondents were 84.8% male, 13.9% female; National civil servant 2.8%、Local civil servant 8.2%、Company executive 33.6%、Media affiliate 10.0%、Teacher・Researcher 11.4% NPO・NGO affiliate 10.7%、Student 1.3%、Freelancer 3.6%、Other 17.7%.</p>		<p>[South Korean Intellectuals Survey] Sample Size = 424</p> <p>Among 5009 EAI affiliated intellectuals, 424 responded to the questionnaire sent via email. The respondents were 79.2% men, 18.2% women; Politician/Government official 1.7%、Professor 30.0%、Researcher 13.4%、Company executive 6.1%、Civil servant (including employees of public institutions) 8.0%、Journalist 6.1%、NPO・NGO affiliate 2.1%、Professional 7.1%、Master's Student 6.4%、Other 6.4%.</p>

※ The percentage decimals were rounded to the nearest tenth, thus the total may not add up to 100%

Reasons for Having a Negative Impression

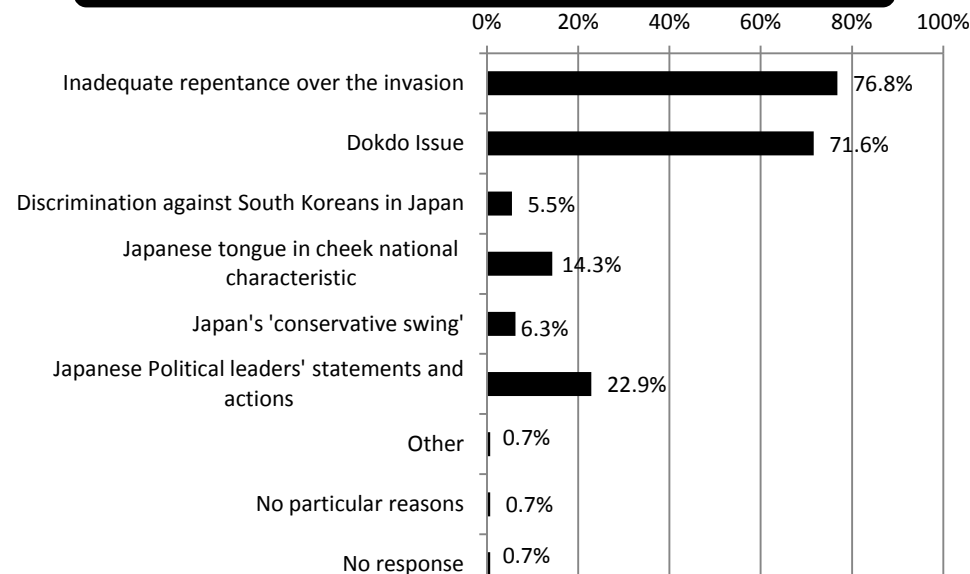
Q 5 -b. (Respondents who answered C/D in Q5) Please select two reasons why you have a negative impression of Japan .

Japan (N = 544)



		Criticism of Japan over historical issues	Takeshima Issue	Incomprehensible nationalist behavior and ideas	Bringing political issues into sports	Korean politicians' statements and actions	Other	No Particular Reason	No Response
Citizens	2014	73.9%	41.9%	17.5%	14.2%	30.0%	3.1%	2.2%	0.4%
	2013	55.8%	50.1%	20.9%	22.8%	-	5.4%	2.4%	0.0%
Intellectuals	2014	60.0%	15.0%	23.2%	10.7%	49.6%	13.2%	1.4%	5.4%
	2013	46.8%	28.5%	27.8%	32.3%	-	19.6%	1.3%	2.5%

South Korea (N = 711)

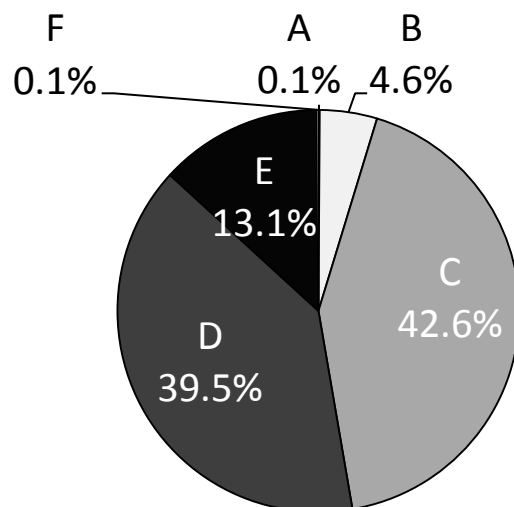


		Inadequate repentance over the invasion	Dokdo Issue	Discrimination against Koreans in Japan	Japanese tongue in cheek characteristic	Japan's 'Conservative swing'	Japanese Politicians statements and actions	Other	No Particular Reason	No Response
Citizens	2014	76.8%	71.6%	5.5%	14.3%	6.3%	22.9%	0.7%	0.7%	0.7%
	2013	77.0%	84.5%	8.2%	21.4%	7.3%	-	-	0.8%	0.0%
Intellectuals	2014	80.8%	34.6%	4.5%	14.1%	25.0%	37.8%	1.9%	0.6%	0.0%
	2013	88.5%	41.6%	1.8%	19.5%	28.3%	-	-	0.9%	1.8%

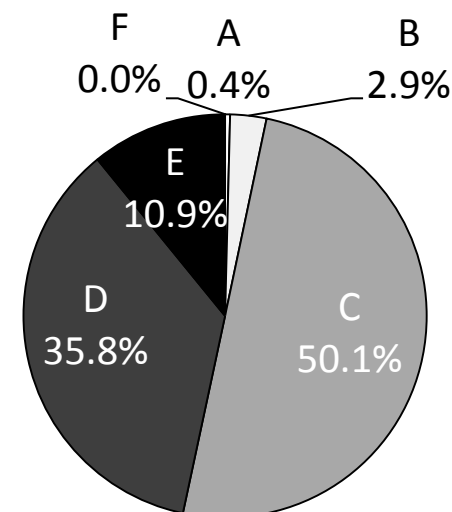
Changes in Impression over the past year

Q6. Has your impression of Japan improved or worsened over the past year?

Japan (N = 1000)



South Korea (N = 1004)



A Greatly Improved
B Relatively Improved
C No Substantial Change
D Relatively Worsened
E Greatly Worsened
F No Response

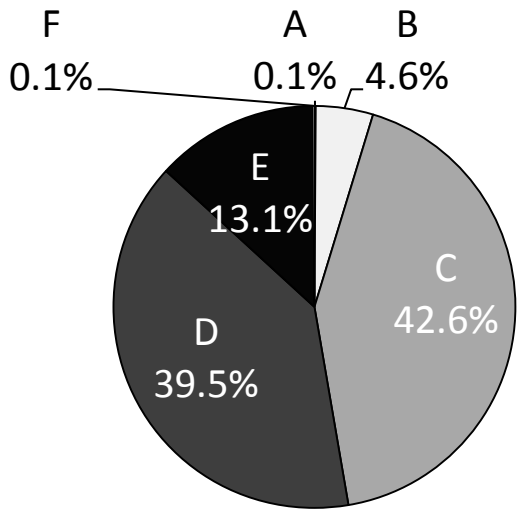
		Greatly Improved	Relatively Improved	No Substantial Change	Relatively Worsened	Greatly Worsened	No Response
Citizens	2014	0.1%	4.6%	42.6%	39.5%	13.1%	0.1%
	2013	2.0%	5.4%	52.9%	31.5%	8.1%	0.1%
Intellectuals	2014	0.9%	2.5%	44.7%	36.0%	14.8%	0.9%
	2013	1.9%	5.7%	56.2%	25.2%	6.3%	4.7%

		Greatly Improved	Relatively Improved	No Substantial Change	Relatively Worsened	Greatly Worsened	No Response
Citizens	2014	0.4%	2.9%	50.1%	35.8%	10.9%	0.0%
	2013	0.5%	3.1%	49.7%	38.1%	8.6%	0.0%
Intellectuals	2014	0.9%	3.5%	36.1%	47.6%	10.1%	1.7%
	2013	0.8%	3.3%	58.0%	31.8%	5.6%	0.5%

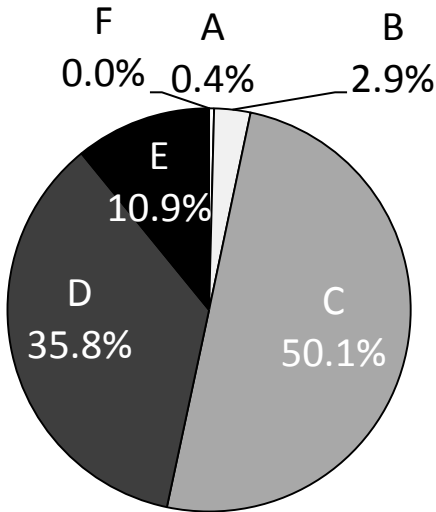
Recognition of Stagnant Negative Impression of Japan

Q6-a. (Respondents who answered C/D in Q6) How would you assess your unchanged or worsened negative impression? [Multiple answers]

Japan (N = 952)



South Korea (N = 971)



- A Greatly Improved
- B Relatively Improved
- C No Substantial Change
- D Relatively Worsened
- E Greatly Worsened
- F No Response

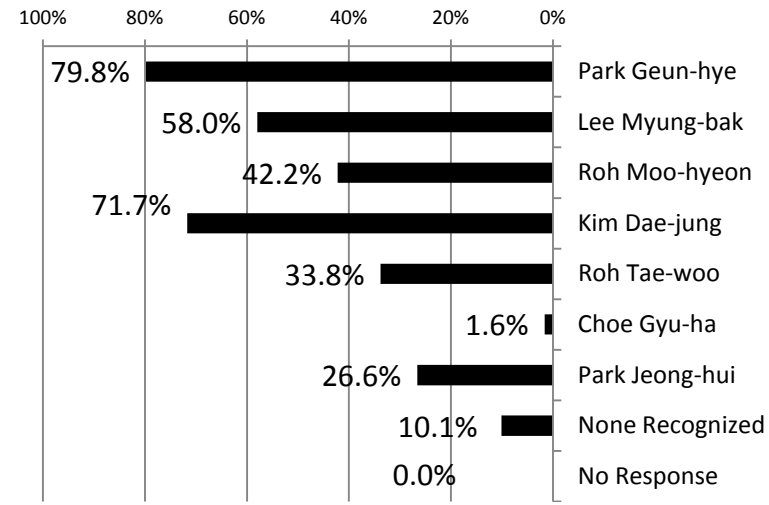
		Greatly Improved	Relatively Improved	No Substantial Change	Relatively Worsened	Greatly Worsened	No Response
Citizens	2014	0.1%	4.6%	42.6%	39.5%	13.1%	0.1%
	2013	2.0%	5.4%	52.9%	31.5%	8.1%	0.1%
Intellectuals	2014	0.9%	2.5%	44.7%	36.0%	14.8%	0.9%
	2013	1.9%	5.7%	56.2%	25.2%	6.3%	4.7%

		Greatly Improved	Relatively Improved	No Substantial Change	Relatively Worsened	Greatly Worsened	No Response
Citizens	2014	0.4%	2.9%	50.1%	35.8%	10.9%	0.0%
	2013	0.5%	3.1%	49.7%	38.1%	8.6%	0.0%
Intellectuals	2014	0.9%	3.5%	36.1%	47.6%	10.1%	1.7%
	2013	0.8%	3.3%	58.0%	31.8%	5.6%	0.5%

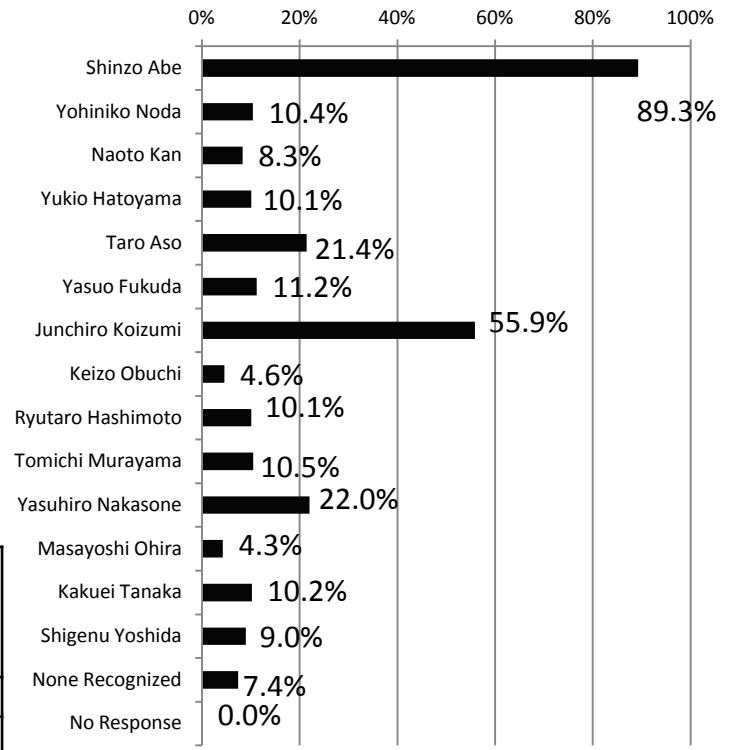
Name Recognition of Politicians in One Another's Countries

Q9. Please select all the names of Japanese politicians you recognize [Multiple Answers]

Japan (N = 1000)



South Korea (N = 1004)



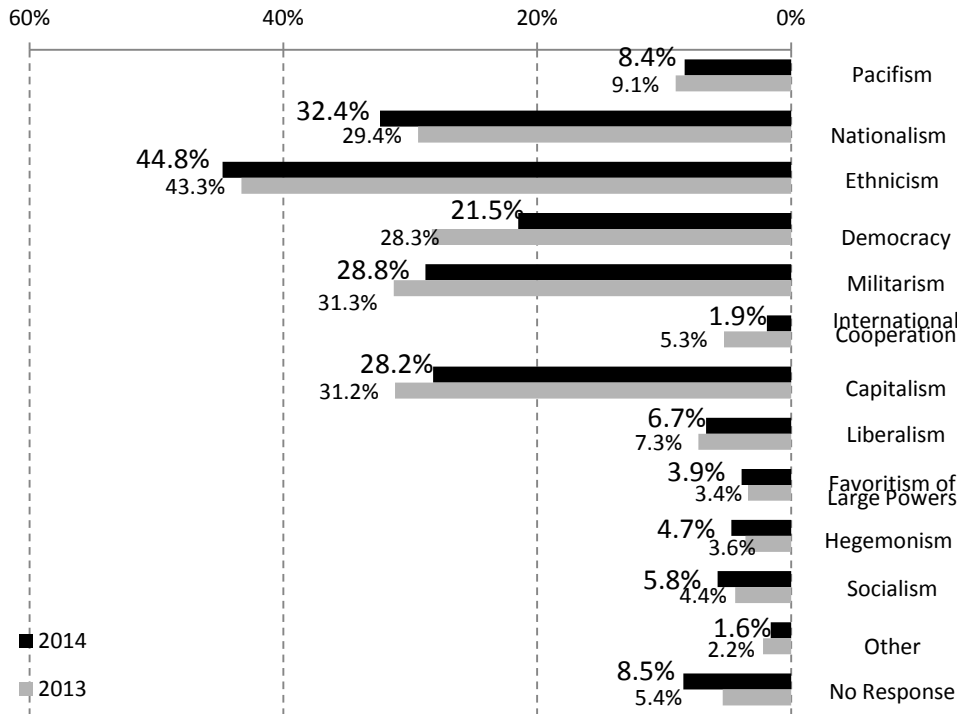
		Park Geun-hye	Lee Myung-bak	Roh Moo-hyeon	Kim Dae-jung	Roh Tae-woo	Choe Gyu-ha	Park Jeong-hui	None	No Response
Citizens	2014	79.8%	58.0%	42.2%	71.7%	33.8%	1.6%	26.6%	10.1%	0.0%
	2013	51.9%	65.5%	49.9%	75.7%	36.4%	1.9%	30.3%	12.0%	0.0%
Intellectuals	2014	97.2%	95.7%	93.2%	96.4%	89.9%	22.7%	85.0%	0.3%	0.9%

		Shinzo Abe	Yohiniko Noda	Naoto Kan	Yukio Hatoyama	Taro Aso	Yasuo Fukuda	Junchiro Koizumi	Keizo Obuchi	Ryutaro Hashimoto	Tomichi Murayama	Yasuhiro Nakasone	Masayoshi Ohira	Kakuei Tanaka	Shigenu Yoshida	None Recognized	No Response
Citizens	2014	89.3%	10.4%	8.3%	10.1%	21.4%	11.2%	55.9%	4.6%	10.1%	10.5%	22.0%	4.3%	10.2%	9.0%	7.4%	0.0%
	2013	66.2%	9.3%	8.6%	10.2%	13.8%	8.8%	43.7%	5.0%	7.6%	3.9%	14.7%	2.3%	6.0%	4.7%	22.3%	0.2%

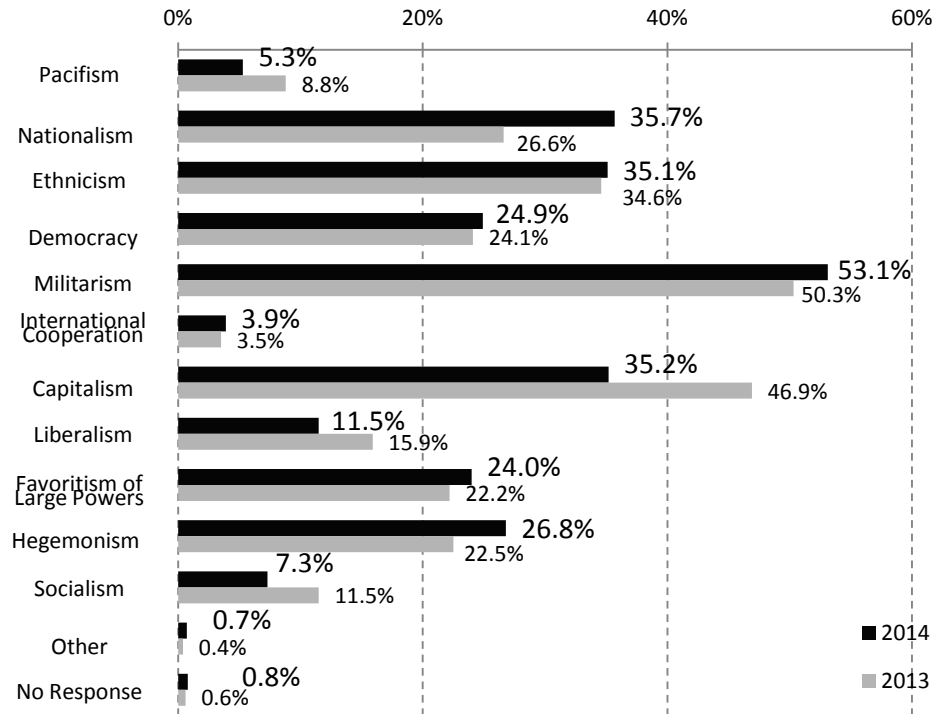
South Korea-Japan's Socio-Political Systems

Q10. What is your perception of Japan's current socio-political system? Please select all that apply. [Max. 3 Answers]

Japan (N = 1000)



South Korea (N = 1004)



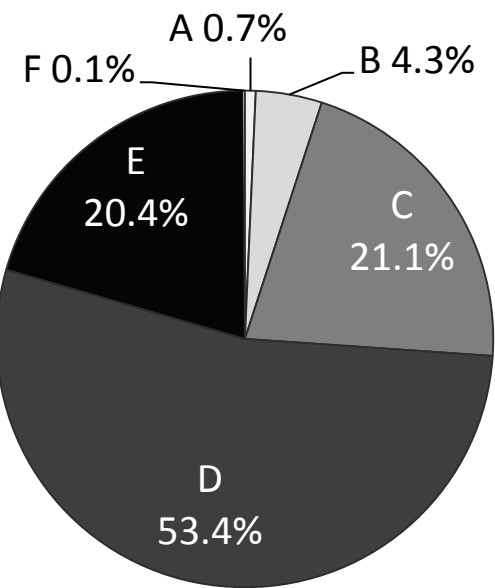
		Pacifism	Nationalism	Ethnicism	Democracy	Militarism	International Cooperation	Capitalism	Liberalism	Favoritism of Large Powers	Hegemonism	Socialism	Other	No Response
Citizens	2014	8.4%	32.4%	44.8%	21.5%	28.8%	1.9%	28.2%	6.7%	3.9%	4.7%	5.8%	1.6%	8.5%
	2013	9.1%	29.4%	43.3%	28.3%	31.3%	5.3%	31.2%	7.3%	3.4%	3.6%	4.4%	2.2%	5.4%
Intellectuals	2014	2.8%	27.6%	70.6%	33.8%	5.8%	4.7%	54.0%	10.6%	5.2%	4.7%	0.3%	10.7%	3.6%
	2013	4.7%	20.9%	70.3%	40.3%	5.6%	11.7%	58.6%	13.2%	3.1%	3.5%	0.3%	9.9%	5.0%

		Pacifism	Nationalism	Ethnicism	Democracy	Militarism	International Cooperation	Capitalism	Liberalism	Favoritism of Large Powers	Hegemonism	Socialism	Other	No Response
Citizens	2014	5.3%	35.7%	35.1%	24.9%	53.1%	3.9%	35.2%	11.5%	24.0%	26.8%	7.3%	0.7%	0.8%
	2013	8.8%	26.6%	34.6%	24.1%	50.3%	3.5%	46.9%	15.9%	22.2%	22.5%	11.5%	0.4%	0.6%
Intellectuals	2014	4.7%	57.8%	53.5%	17.7%	35.8%	4.2%	34.0%	8.0%	22.2%	30.7%	0.2%	2.4%	2.1%
	2013	10.9%	52.2%	50.6%	28.8%	27.5%	6.6%	50.6%	12.5%	11.2%	23.2%	0.5%	2.3%	0.0%

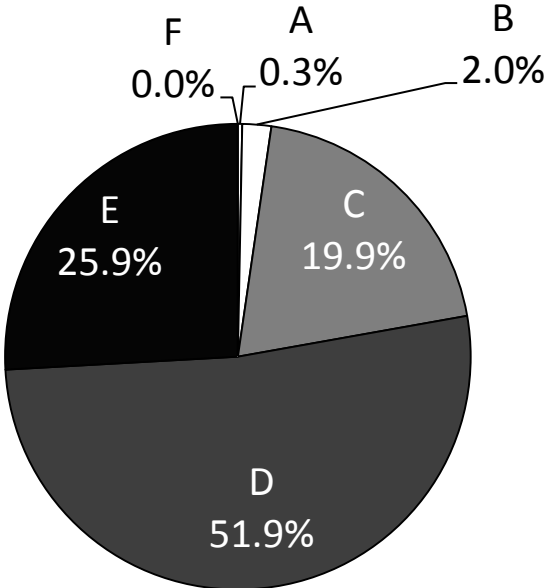
Current South Korea-Japan Relations

Q12. How do you view the current South Korea-Japan bilateral relations? [Multiple answers]

Japan (N = 1000)



South Korea (N = 1004)



- A Extremely Good
- B Relatively Good
- C Neither
- D Relatively Bad
- E Extremely Bad
- F No Response

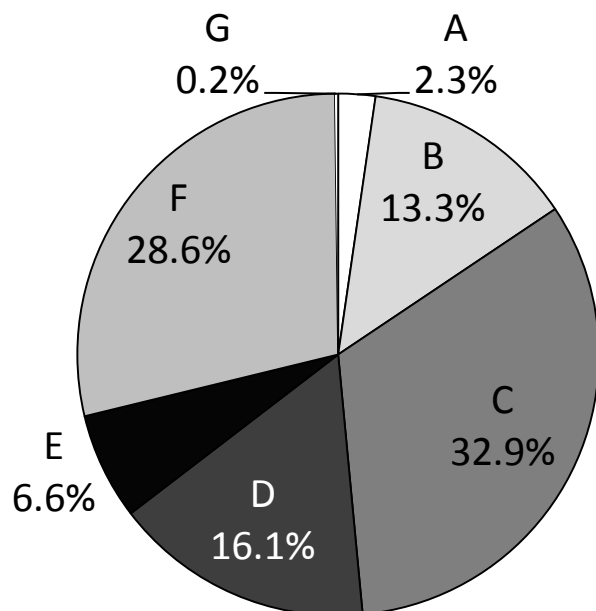
		Extremely Good	Relatively Good	Neither	Relatively Bad	Extremely Bad	No Response
Citizens	2014	0.7%	4.3%	21.1%	53.4%	20.4%	0.1%
	2013	0.5%	10.8%	33.6%	46.8%	8.3%	0.0%
Intellectuals	2014	0.8%	0.9%	7.7%	48.7%	40.4%	1.4%
	2013	0.3%	14.1%	30.4%	42.8%	7.3%	5.0%

		Extremely Good	Relatively Good	Neither	Relatively Bad	Extremely Bad	No Response
Citizens	2014	0.3%	2.0%	19.9%	51.9%	25.9%	0.0%
	2013	0.1%	3.3%	29.2%	52.2%	15.2%	0.0%
Intellectuals	2014	0.0%	1.2%	9.4%	39.2%	48.3%	1.9%
	2013	0.3%	3.3%	34.1%	48.1%	13.7%	0.5%

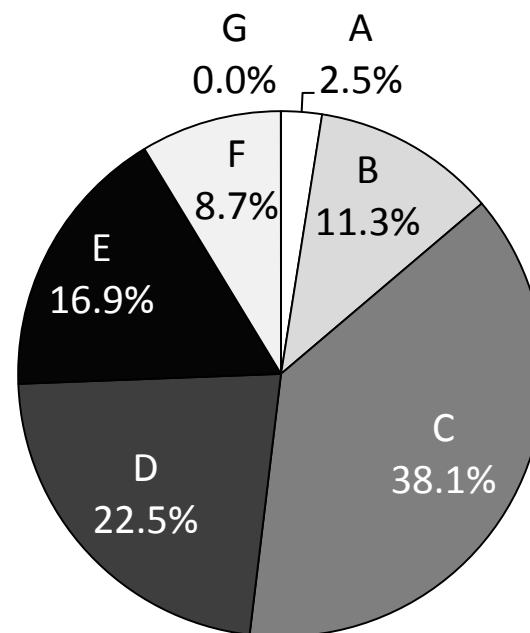
Future South Korea-Japan Relations

Q14. How do you project the future of South Korea-Japan bilateral relations? [Single Answer]

Japan (N = 1000)



South Korea (N = 1004)



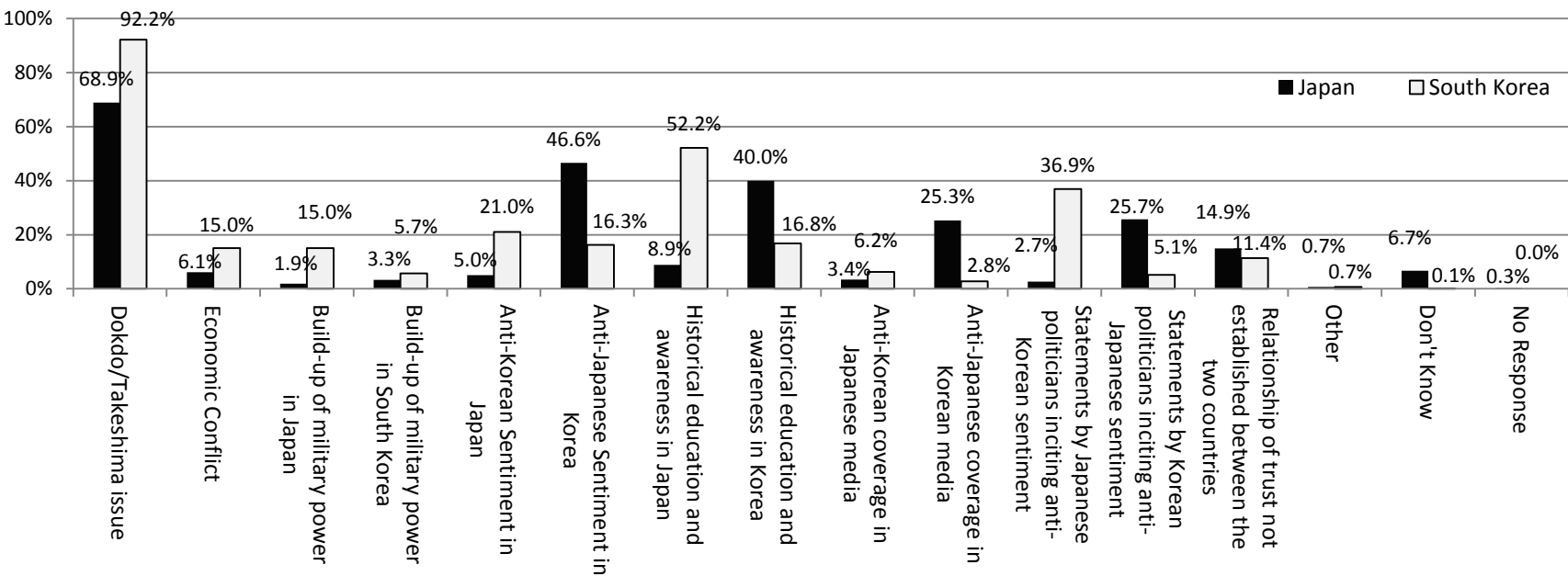
- A Will Improve
- B Will probably improve
- C No Change
- D Will probably get worse
- E Will get worse
- F Neither/Don't Know
- G No Response

		Will Improve	Will Probably Improve	No Change	Will Probably Get Worse	Will Get Worse	Don't Know	No Response
Citizens	2014	2.3%	13.3%	32.9%	16.1%	6.6%	28.6%	0.2%
	2013	6.0%	17.1%	34.6%	12.7%	5.5%	24.1%	0.0%
Intellectuals	2014	6.0%	25.4%	31.4%	15.0%	8.5%	12.3%	1.3%
	2013	8.5%	33.9%	27.1%	11.7%	5.0%	8.0%	5.7%

		Will Improve	Will Probably Improve	No Change	Will Probably Get Worse	Will Get Worse	Don't Know	No Response
Citizens	2014	2.5%	11.3%	38.1%	22.5%	16.9%	8.7%	0.0%
	2013	2.0%	12.0%	59.5%	19.0%	7.6%	0.0%	0.0%
Intellectuals	2014	8.0%	29.2%	32.5%	11.6%	14.2%	3.1%	1.4%
	2013	5.9%	29.3%	43.3%	12.2%	6.6%	2.8%	0.0%

Hindrances in Improved South Korea-Japan Relations

Q15. Which factors do you consider the biggest hindrances on improving South Korea-Japan bilateral relations?
[Maximum 3 Answer]

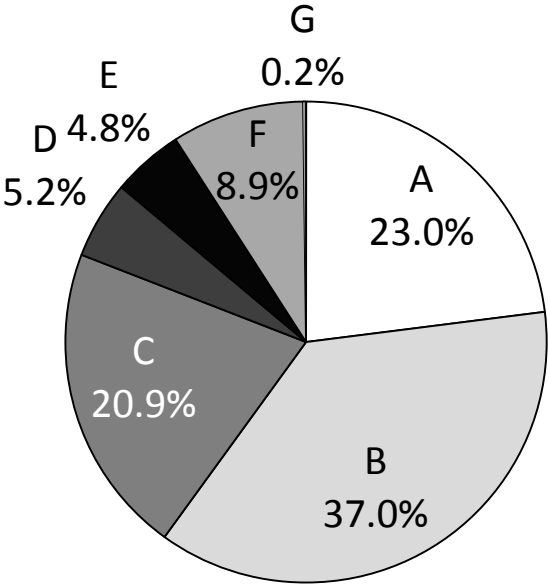


		Dokdo/ Takeshima Issue	Economic Conflict	Increased military in Japan	Increased military in S. Korea	Anti- Korean sentiment in Japan	Anti- Japanese sentiment in S. Korea	Japan's history education/ awareness	S. Korea's history education/ awareness	Anti- Korean media coverage in Japan	Anti-Japan media coverage in S. Korea	Japan Politicians anti- Korean statement	Korean Politicians anti- Japanese statement	Lack of trust between the two countries	Other	Don't Know	No Response
Japanese Citizens	2014	68.9%	6.1%	1.9%	3.3%	5.0%	46.6%	8.9%	40.0%	3.4%	25.3%	2.7%	25.7%	14.9%	0.7%	6.7%	0.3%
	2013	83.7%	9.3%	0.7%	4.5%	4.9%	55.1%	9.0%	33.8%	3.1%	25.3%	1.5%	14.7%	16.0%	1.5%	-	0.6%
Japanese Intellectuals	2014	39.0%	4.3%	3.5%	0.8%	15.3%	39.7%	15.0%	41.7%	13.6%	31.0%	12.3%	30.3%	17.2%	6.3%	0.9%	6.0%
	2013	61.9%	10.8%	2.6%	0.7%	14.4%	40.0%	20.2%	45.9%	9.7%	26.1%	11.3%	17.6%	20.3%	7.5%	-	5.4%
S. Korean Citizens	2014	92.2%	15.0%	15.0%	5.7%	21.0%	16.3%	52.2%	16.8%	6.2%	2.8%	36.9%	5.1%	11.4%	0.7%	0.1%	0.0%
	2013	94.6%	19.0%	9.2%	3.6%	24.7%	18.9%	61.1%	6.4%	6.9%	1.4%	31.1%	0.9%	6.9%	0.5%	-	0.0%
S. Korean Intellectuals	2014	58.3%	3.8%	28.1%	0.7%	10.1%	17.0%	75.9%	4.7%	6.8%	7.1%	49.8%	4.2%	26.4%	0.9%	0.0%	1.2%
	2013	77.6%	8.7%	14.5%	0.5%	9.4%	18.3%	79.4%	3.6%	3.6%	3.3%	46.1%	4.8%	22.1%	1.0%	-	0.0%

Importance of South Korea-Japan Relations

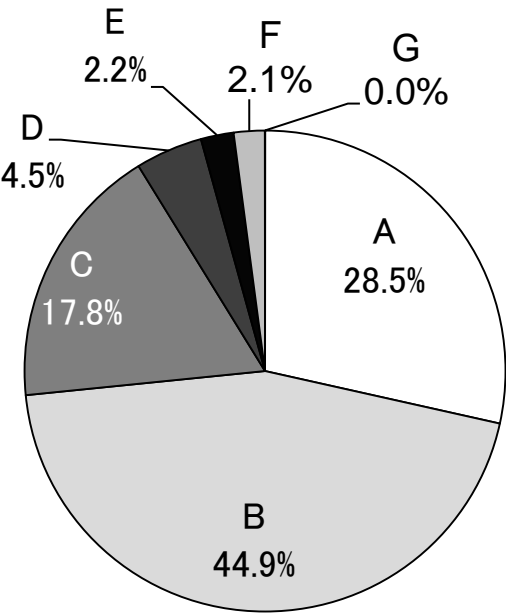
Q16. How important do you consider the South Korea-Japan relations for South Korea? [Single Answer]

Japan (N = 1000)



- A Important
- B Relatively Important
- C Neither
- D Relatively Unimportant
- E Unimportant
- F Don't Know
- G No Response

South Korea (N = 1004)



		Important	Relatively Important	Neither	Relatively Unimportant	Unimportant	Don't Know	No Response
Citizens	2014	23.0%	37.0%	20.9%	5.2%	4.8%	8.9%	0.2%
	2013	36.8%	37.2%	10.8%	3.3%	3.8%	8.1%	0.0%
Intellectuals	2014	51.7%	29.1%	5.5%	6.3%	5.5%	0.6%	1.3%
	2013	58.6%	22.6%	5.9%	2.8%	4.0%	0.2%	5.9%

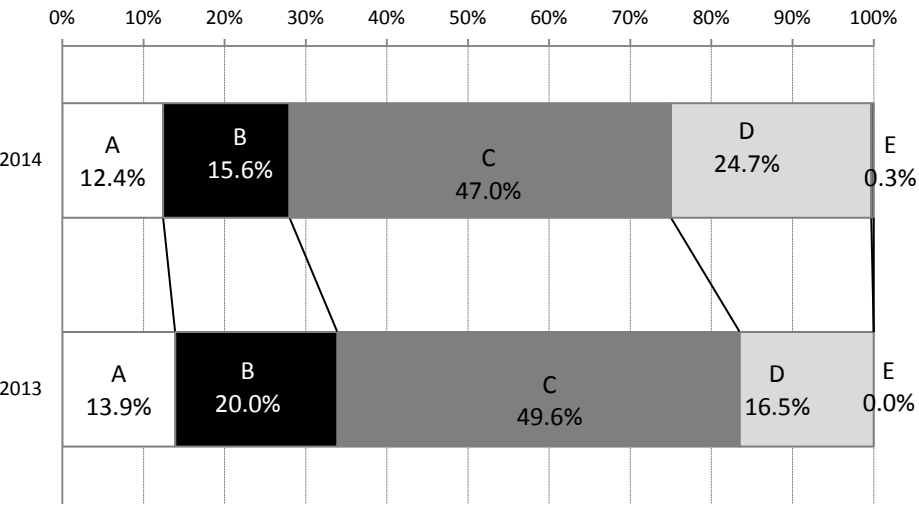
		Important	Relatively Important	Neither	Relatively Unimportant	Unimportant	Don't Know	No Response
Citizens	2014	28.5%	44.9%	17.8%	4.5%	2.2%	2.1%	0.0%
	2013	22.6%	51.0%	20.4%	4.9%	1.1%	0.0%	0.0%
Intellectuals	2014	40.6%	46.7%	9.0%	1.7%	0.2%	0.0%	1.9%
	2013	36.9%	53.4%	8.1%	0.8%	0.3%	0.3%	0.3%

South Korea-Japan’s Relations Compared to China’s

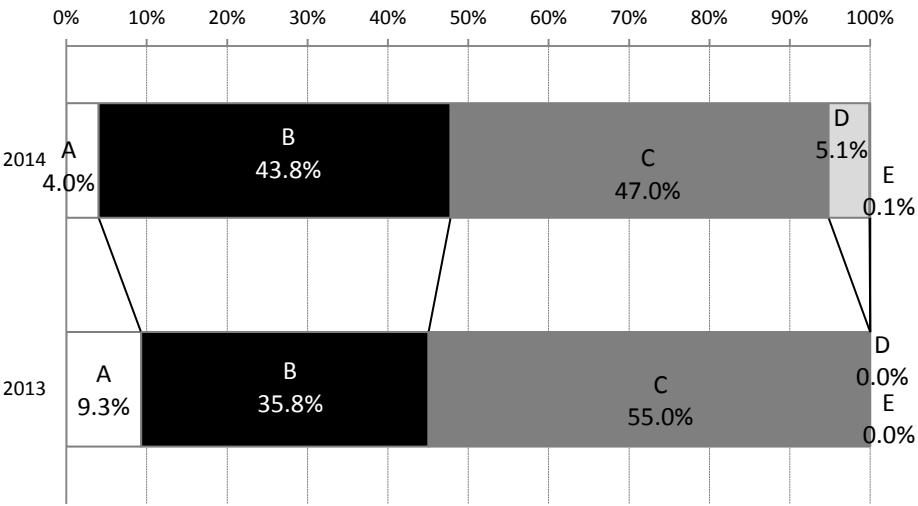
Q17. Which do you consider more important for Korea’s future, Korea-Japan or Korea-China relations?
[Single Response]

- A Korea-Japan Relations is more important
- B China Relations is more important
- C Both
- D Neither/Don’t Know
- E No Response

Japan (N = 1000)



South Korea (N = 1004)



		Relations with Korea are more important	Relations with China is more important	Both are Important	Neither/Don't Know	No Response
Citizens	2014	12.4%	15.6%	47.0%	24.7%	0.3%
	2013	13.9%	20.0%	49.6%	16.5%	0.0%
Intellectuals	2014	9.5%	39.2%	45.3%	4.3%	1.7%
	2013	12.5%	31.1%	47.1%	3.3%	5.9%

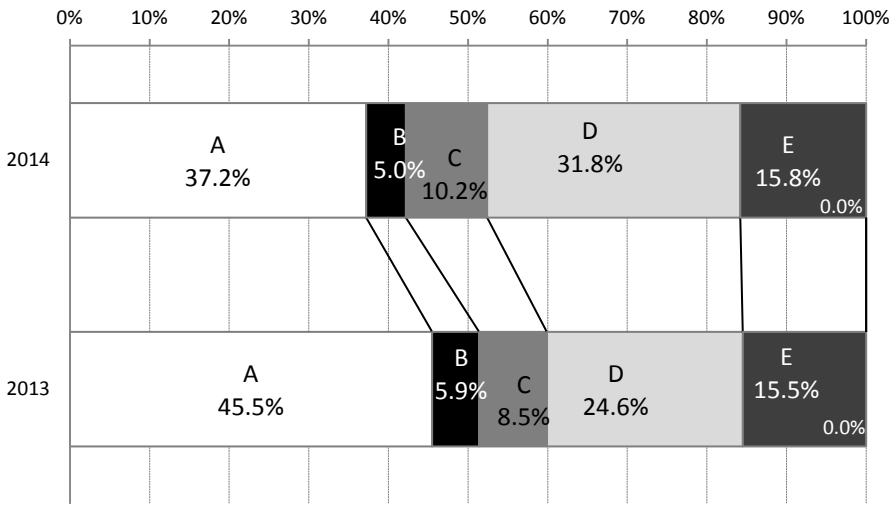
		Relations with Japan are more important	Relations with China is more important	Both are Important	Neither/Don't Know	No Response
Citizens	2014	4.0%	43.8%	47.0%	5.1%	0.1%
	2013	9.3%	35.8%	55.0%	0.0%	0.0%
Intellectuals	2014	6.4%	30.4%	61.1%	0.5%	1.7%
	2013	4.3%	45.5%	49.9%	0.3%	0.0%

Affinity Towards Japan/South Korea and China

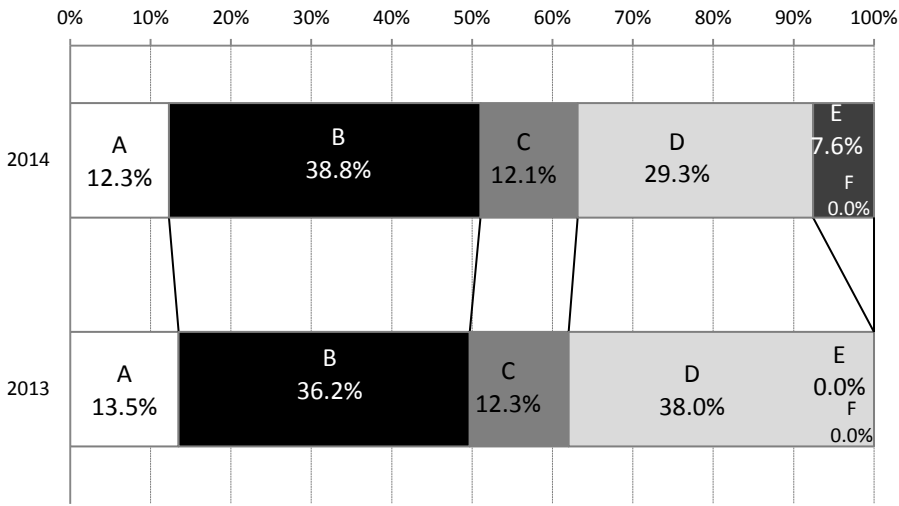
Q18. Which country do you feel a closer affinity towards, Japan or China? [Single Response]

A Closer affinity towards Korea/Japan B Closer affinity towards China C Both Equally D Neither E Don't Know E No Response

Japan (N = 1000)



South Korea (N = 1004)



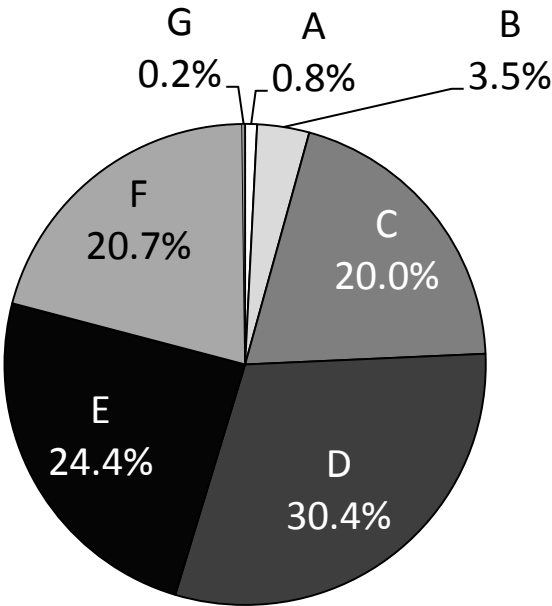
		Closer affinity towards Korea	Closer affinity towards China	Equal affinity towards both countries	No affinity towards neither country	Don't Know	No Response
Citizens	2014	37.2%	5.0%	10.2%	31.8%	15.8%	0.0%
	2013	45.5%	5.9%	8.5%	24.6%	15.5%	0.0%
Intellectuals	2014	38.1%	12.2%	16.9%	25.3%	6.3%	1.3%
	2013	40.9%	11.1%	18.6%	20.0%	3.3%	6.1%

		Closer affinity towards Japan	Closer affinity towards China	Equal affinity towards both countries	No affinity towards neither country	Don't Know	No Response
Citizens	2014	12.3%	38.8%	12.1%	29.3%	7.6%	0.0%
	2013	13.5%	36.2%	12.3%	38.0%	0.0%	0.0%
Intellectuals	2014						
	2013	27.0%	18.6%	23.7%	28.0%	2.5%	0.3%

Effects of Diplomacy between Korea and Japan

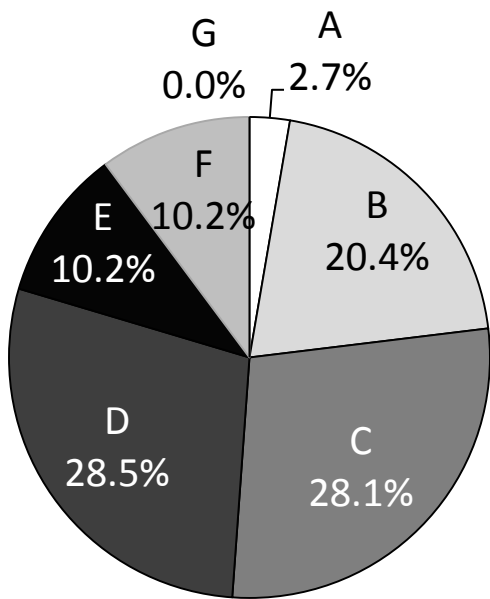
Q29. Do you consider current Japan-South Korea Diplomatic Relations as Functioning? [Single Answer]

Japan (N = 1000)



- A Think that they are effective
- B Think that they are relatively effective
- C Neutral
- D Think that they are relatively ineffective
- E Think that they are ineffective
- F Don't Know
- G No Response

South Korea (N = 1004)



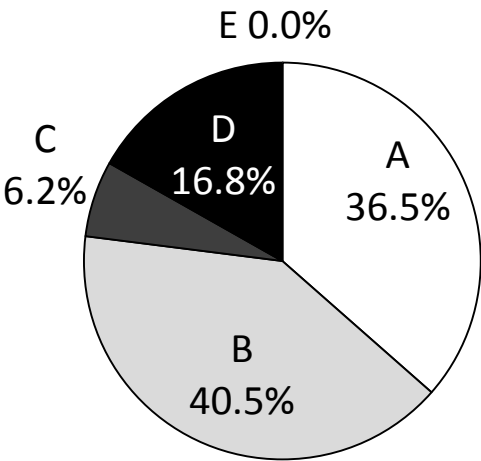
		Effective	Relatively Effective	Neutral	Relatively Ineffective	Ineffective	Don't Know	No Response
Citizens	2014	0.8%	3.5%	20.0%	30.4%	24.4%	20.7%	0.2%
Intellectuals	2014	0.8%	5.5%	16.6%	36.2%	38.9%	1.1%	0.9%

		Effective	Relatively Effective	Neutral	Relatively Ineffective	Ineffective	Don't Know	No Response
Citizens	2014	2.7%	20.4%	28.1%	28.5%	10.2%	10.2%	0.0%

Necessity of Korea-Japan Bilateral Talks

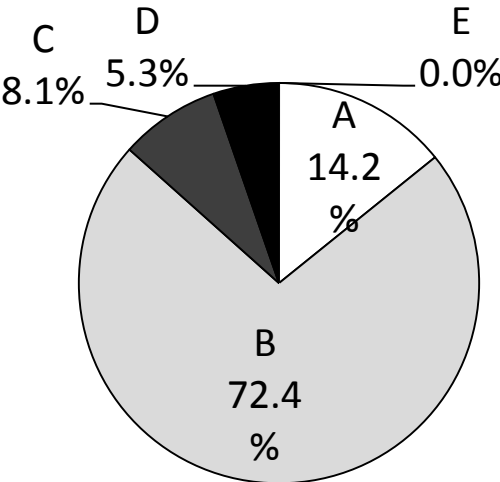
Q25. In the past year there has not been a Korea-Japan Summit. Do you think it is necessary to improve the current Korea-Japan Relations? [Single Answer]

Japan (N = 1000)



- A The need exists and need to take place as soon as possible
- B The need exists but there is no urgency
- C Not needed
- D Don't know
- E No response

South Korea (N = 1004)



		Needed ASAP	Necessary but not urgent	Not Needed	Don't Know	No Response
Citizens	2014	36.5%	40.5%	6.2%	16.8%	0.0%
Intellectuals	2014	53.4%	38.2%	6.6%	0.6%	1.1%

		Needed ASAP	Necessary but not urgent	Not Needed	Don't Know	No Response
Citizens	2014	14.2%	72.4%	8.1%	5.3%	0.0%
Intellectuals	2014	21.0%	72.6%	3.8%	0.7%	1.9%

※ Note (Japan N=1000, Korea N=1004)

Q. Korea-Japan summits have been held to negotiate issues between Korea and Japan since 2004. But issues such as, the controversies surrounding Yasukuni Shrine in 2005 and South Korean President Lee Myung-bak's visit to Dokdo Island, have delayed the summit talks. Do you think there needs to be shuttle diplomacy based on Korea-Japan summits? [Single Answer]

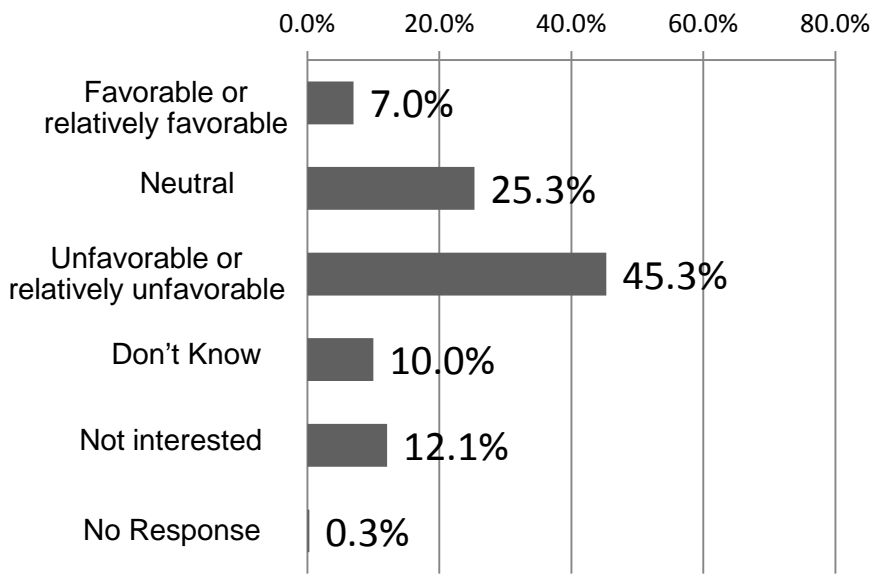
		Needed ASAP	Necessary but not urgent	Not Needed	Don't Know	No Response
Citizens	2013	36.5%	40.5%	6.2%	16.8%	0.0%

		Needed ASAP	Necessary but not urgent	Not Needed	Don't Know	No Response
Citizens	2013	27.8%	57.1%	12.1%	3.1%	0.0%

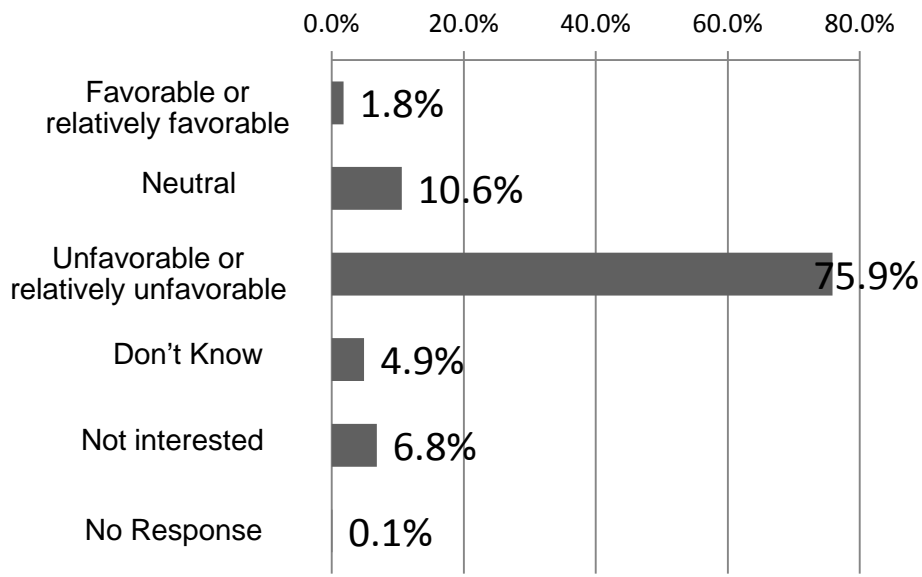
Impression of One Another's Leaders

Q27. What is your impression of Japanese Prime Minister Abe and South Korean President Park? [Single Answer]

Japan (N = 1000)



South Korea (N = 1004)



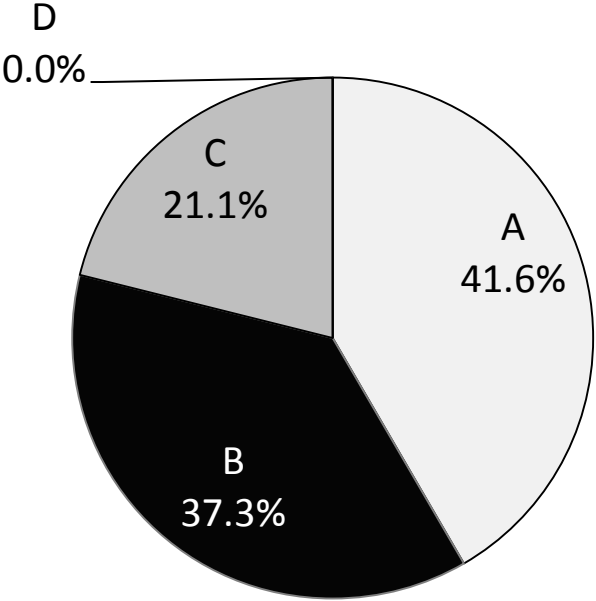
		Favorable	Relatively Favorable	Neutral	Relatively Unfavorable	Unfavorable	Don't Know	Not Interested	No Response
Citizens	2014	0.6%	6.4%	25.3%	29.3%	16.0%	10.0%	12.1%	0.3%
Intellectuals	2014	0.8%	9.3%	26.4%	31.1%	28.4%	1.3%	1.6%	1.1%

		Favorable	Relatively Favorable	Neutral	Relatively Unfavorable	Unfavorable	Don't Know	Not Interested	No Response
Citizens	2014	0.7%	1.1%	10.6%	35.9%	40.0%	4.9%	6.8%	0.1%

Intention to visit each other's country

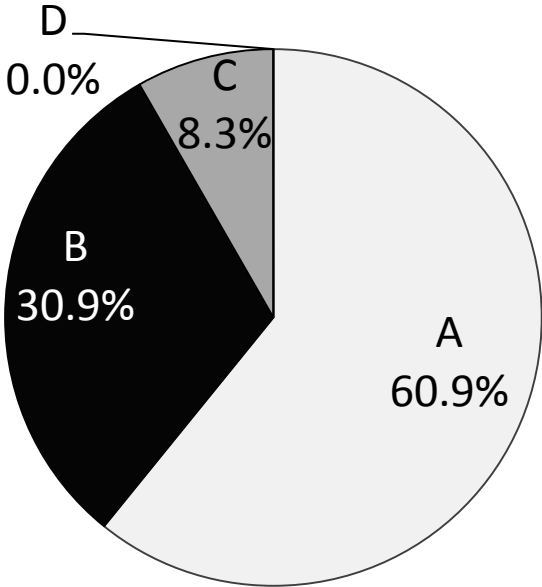
Q19. If you had the opportunity would you want to visit Japan? [Single Answer]

Japan (N = 1000)



- A Would like to visit
- B Would not like to visit
- C Don't Know
- D No Response

South Korea (N = 1004)



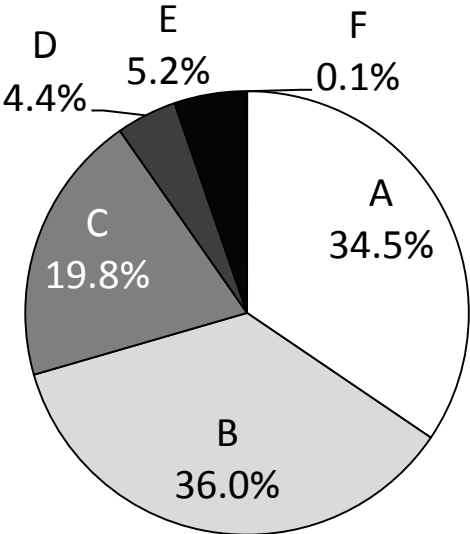
		Yes	No	Don't Know	No Response
Citizens	2014	60.9%	30.9%	8.3%	0.0%
	2013	58.0%	29.5%	9.9%	2.7%

		Yes	No	Don't Know	No Response
Citizens	2014	41.6%	37.3%	21.1%	0.0%
	2013	47.7%	33.9%	18.4%	0.0%
Intellectuals	2014	67.0%	18.8%	13.1%	1.1%

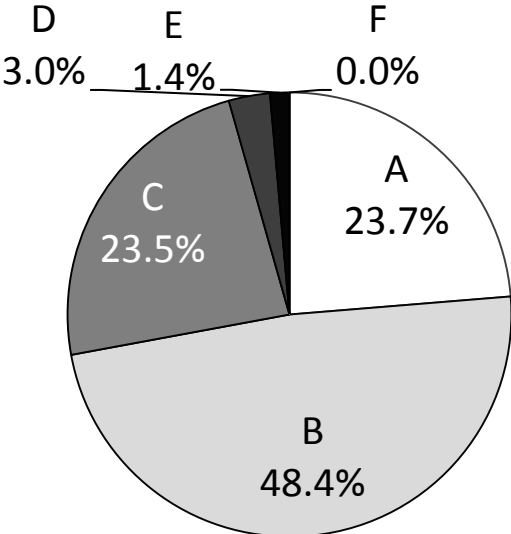
Importance of Non-governmental Interfaces

Q20. Do you consider personal exchanges (study abroad, academic and cultural exchanges, etc.) between Korea and Japan important for the development or improvement of Korea-Japan relations? [Single Answer]

Japan (N = 1000)



South Korea (N = 1004)



- A Important
- B Relatively Important
- C Neutral
- D Relatively Unimportant
- E Unimportant
- F No Response

		Important	Relatively Important	Neutral	Relatively Unimportant	Unimportant	No Response
Citizens	2014	34.5%	36.0%	19.8%	4.4%	5.2%	0.1%
	2013	39.1%	35.6%	17.6%	4.8%	2.8%	0.1%
Intellectuals	2014	71.7%	17.4%	4.6%	1.9%	3.3%	1.1%

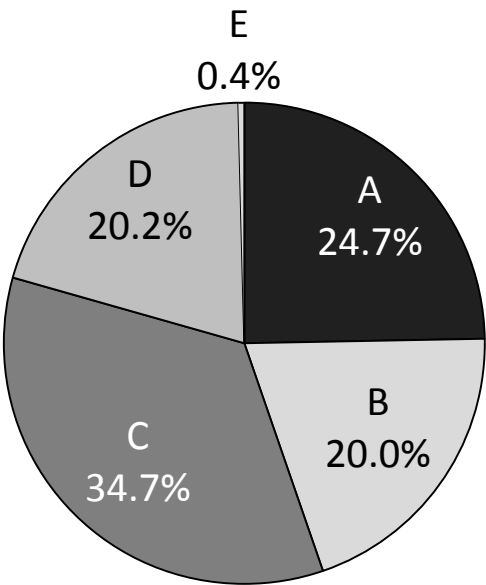
		Important	Relatively Important	Neutral	Relatively Unimportant	Unimportant	No Response
Citizens	2014	23.7%	48.4%	23.5%	3.0%	1.4%	0.0%
	2013	26.0%	49.2%	19.9%	3.9%	1.0%	0.0%

Historical Issues and Korea-Japan Relations

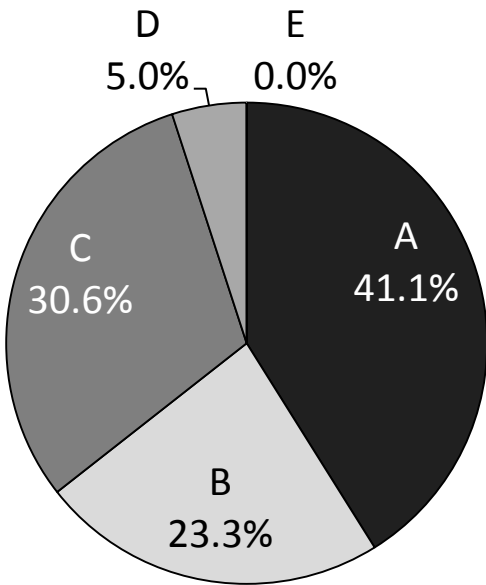
Q23. What is your opinion on Korea-Japan’s Relations and Historical Issues? [Single Answer]

Japan (N = 1000)

South Korea (N = 1004)



- A Relations will not develop if issues of historical understanding are not resolved
- B As relations develop, issues of historical understanding will be gradually resolved
- C Even if relations develop, it will be difficult to resolve issues of historical understanding
- D Don't know
- E No response

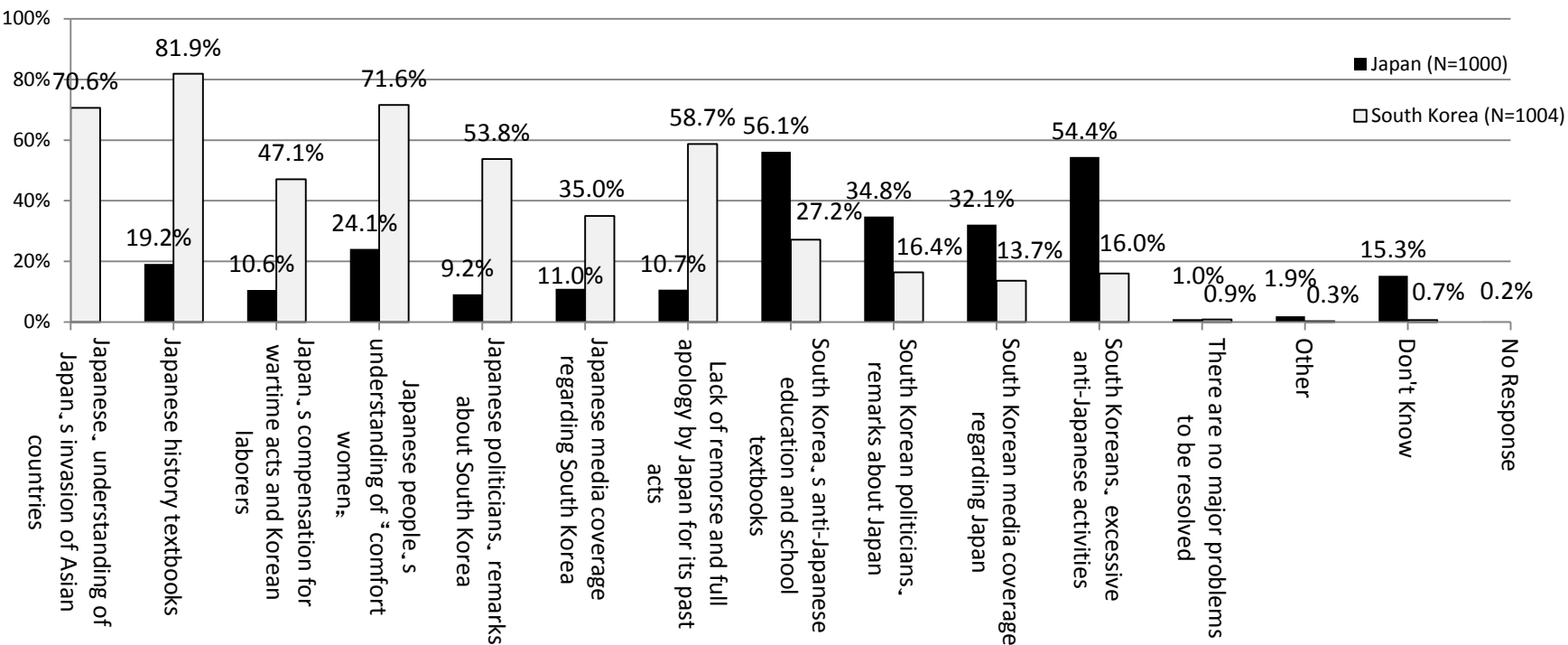


		Relations will not develop unless historical issue is resolved	As relations develop, historical issue will be gradually resolve	Even if relations develop, difficult to resolve historical issue	Don't Know	No Response
Citizens	2014	24.7%	20.0%	34.7%	20.2%	0.4%
	2013	25.9%	23.6%	32.1%	18.4%	0.0%
Intellectuals	2014	17.9%	34.8%	41.5%	4.4%	1.4%

		Relations will not develop unless historical issue is resolved	As relations develop, historical issue will be gradually resolve	Even if relations develop, difficult to resolve historical issue	Don't Know	No Response
Citizens	2014	41.1%	23.3%	30.6%	5.0%	0.0%
	2013	41.5%	29.2%	29.3%	0.0%	0.0%

Challenges in Issues of Historical Understanding between Korea and Japan

Q22. Which historical issues do you think must be resolved to improve Korea-Japan’s Relations? [Multiple Answer]



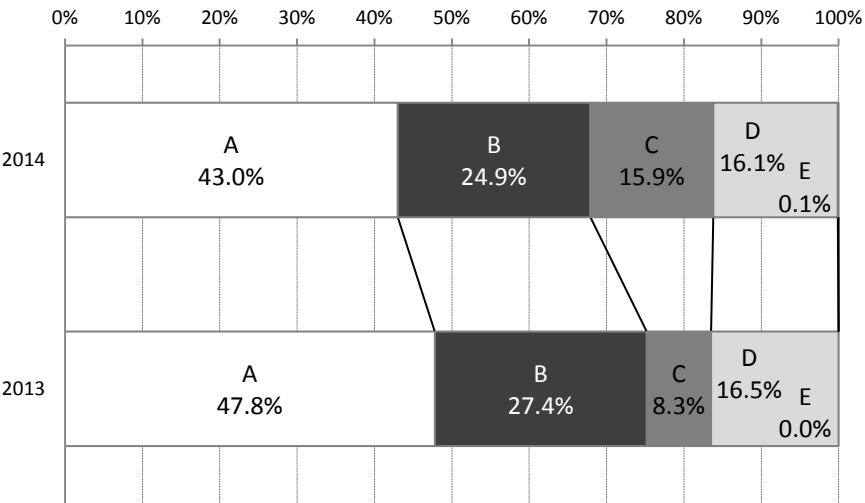
		Japanese’ understanding of Japan’s invasion of Asian countries	Japanese history textbooks	Japan’s compensati on for wartime acts and Korean laborers	Japanese people’s understand ing of “comfort women”	Japanese politicians’ remarks about South Korea	Japanese media coverage regarding South Korea	Lack of remorse and full apology by Japan for its past acts	South Korea’s anti- Japanese education and school textbooks	South Korean politicians’ remarks about Japan	South Korean media coverage regarding Japan	South Koreans’ excessive anti- Japanese activities	There are no major problems to be resolved	Other	Don’t Know	No Respo nse
Japanese Citizens	2014	22.7%	19.2%	10.6%	24.1%	9.2%	11.0%	10.7%	56.1%	34.8%	32.1%	54.4%	1.0%	1.9%	15.3%	0.2%
	2013	26.8%	23.3%	11.8%	24.1%	8.2%	10.6%	12.4%	54.8%	25.9%	28.5%	55.2%	0.7%	2.0%	15.1%	0.0%
Japanese Intellectuals	2014	41.4%	23.7%	18.8%	32.5%	35.5%	34.8%	19.9%	66.4%	51.5%	52.3%	54.3%	2.2%	7.4%	2.2%	0.9%
Korean Citizens	2014	70.6%	81.9%	47.1%	71.6%	53.8%	35.0%	58.7%	27.2%	16.4%	13.7%	16.0%	0.9%	0.3%	0.7%	0.0%
	2013	51.1%	72.4%	16.4%	42.0%	24.3%	11.9%	35.4%	7.5%	4.0%	2.4%	3.6%	0.3%	0.2%	0.0%	0.0%

Japanese Prime Minister’s Visit to Yasukuni Shrine

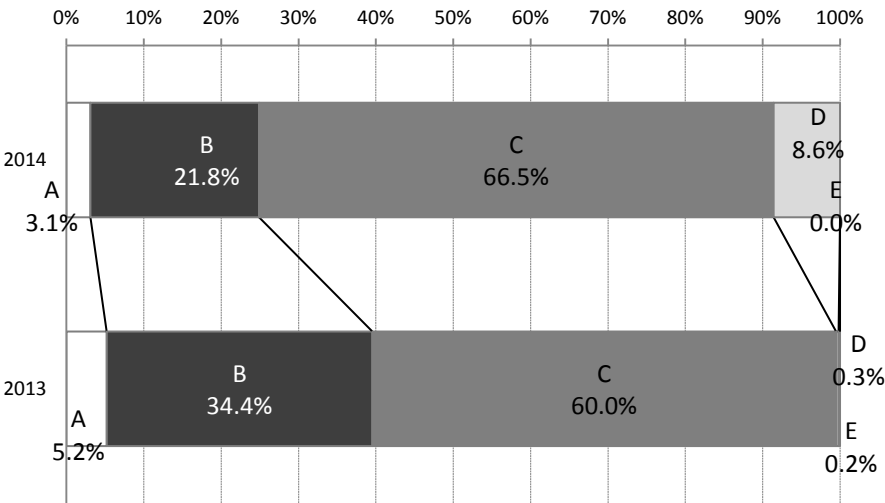
Q24. What is your opinion on Japanese Prime Minister’s Visit to Yasukuni Shrine? [Single Answer]

- A No Problem
- B No problem if he visited as a private citizen
- C Not acceptable even if he visited as a private citizen
- D Don’t Know
- E No Response

Japan (N = 1000)



South Korea (N = 1004)

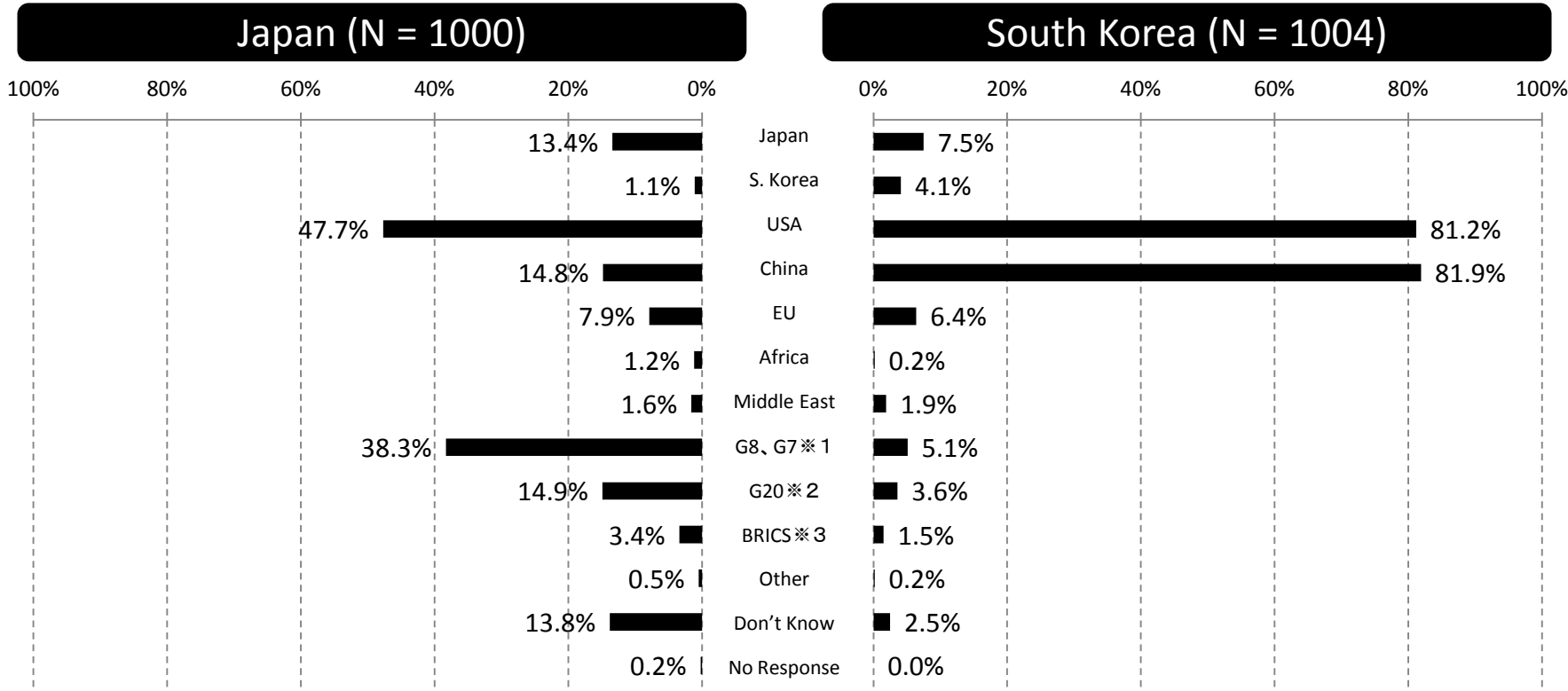


		No Problem	No problem if visited as one citizen	Not acceptable even if visited as one citizen	Don't Know	No Response
Citizens	2014	43.0%	24.9%	15.9%	16.1%	0.1%
	2013	47.8%	27.4%	8.3%	16.5%	0.0%
Intellectuals	2014	23.2%	19.1%	52.6%	3.3%	1.7%

		No Problem	No problem if visited as one citizen	Not acceptable even if visited as one citizen	Don't Know	No Response
Citizens	2014	3.1%	21.8%	66.5%	8.6%	0.0%
	2013	5.2%	34.4%	60.0%	0.3%	0.2%

Countries and Areas that will Lead the World from now on

Q34. Please select up to two countries/areas you consider future leaders of global politics. [Up to 2 Answers]



		Japan	S. Korea	USA	China	EU	Africa	Middle East	G8/G7	G20	BRICS	Other	Don't Know	No Response
Citizens	2014	13.4%	1.1%	47.7%	14.8%	7.9%	1.2%	1.6%	38.3%	14.9%	3.4%	0.5%	13.8%	0.2%
	2013	9.9%	1.2%	51.3%	18.7%	11.0%	1.0%	1.4%	24.7%	19.3%	4.6%	0.9%	13.4%	0.0%
Intellectuals	2014	4.1%	1.1%	53.9%	38.1%	6.6%	1.4%	0.5%	31.4%	24.0%	7.4%	3.6%	3.2%	2.5%

		Japan	S. Korea	USA	China	EU	Africa	Middle East	G8/G7	G20	BRICS	Other	Don't Know	No Response
Citizens	2014	7.5%	4.1%	81.2%	81.9%	6.4%	0.2%	1.9%	5.1%	3.6%	1.5%	0.2%	2.5%	0.0%
	2013	4.7%	5.5%	74.8%	71.7%	4.1%	0.6%	1.4%	10.5%	9.9%	2.1%	0.2%	0.1%	0.0%

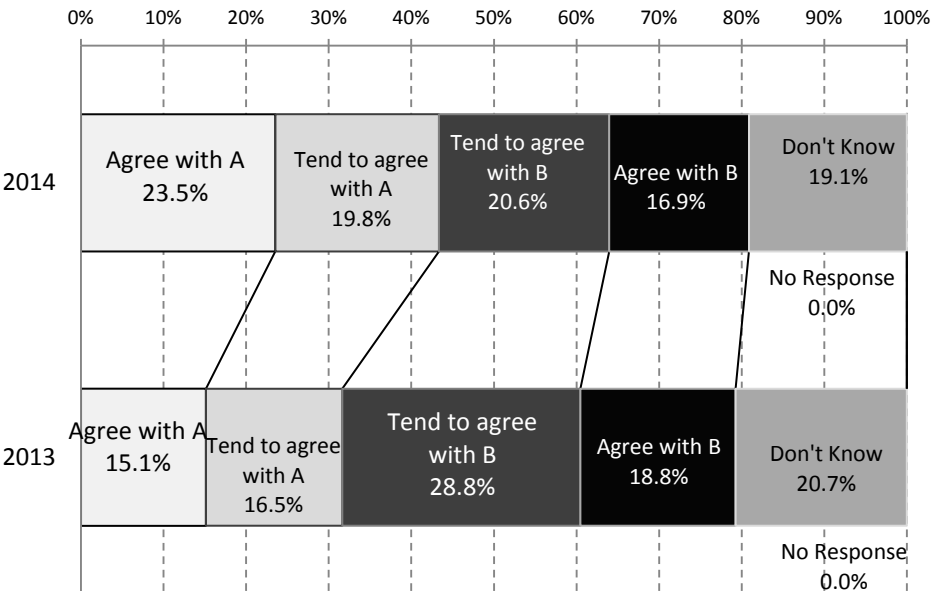
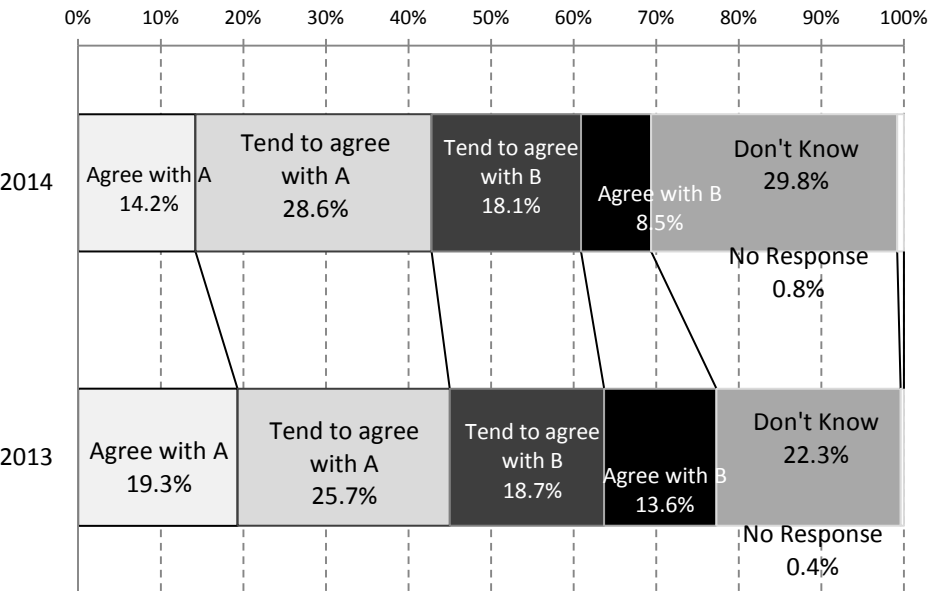
※1 G8 [Germany, Russia, USA, UK, Italy, Japan, Canada, France]
G7= G8 - Russia
※2 G20 = G8+ South Africa, Mexico, Brazil, Saudi Arabia, Argentina, India, Indonesia, China, Turkey, South Korea, Australia, EU
※3 BRICS= South Africa, Russia, Brazil, India, China

Economic Relations between South Korea and Japan

Q32. Is your opinion on economic relations between South Korea and Japan closer to A or B? Please select one
[Single Answer]

Japan (N = 1000)

South Korea (N = 1004)



A
Economic growth in South Korea is both beneficial and necessary for Japan.



B
Economic growth in South Korea is a threat to Japan.

A
Economic growth in Japan is both beneficial and necessary for S. Korea.



B
Economic growth in Japan is a threat to South Korea.

		Agree with A	Tend to Agree with A	Tend to Agree with B	Agree with B	Don't Know	No Response
Citizens	2014	14.2%	28.6%	18.1%	8.5%	29.8%	0.8%
	2013	19.3%	25.7%	18.7%	13.6%	22.3%	0.4%
Intellectuals	2014	30.5%	44.2%	6.8%	5.2%	12.5%	0.8%

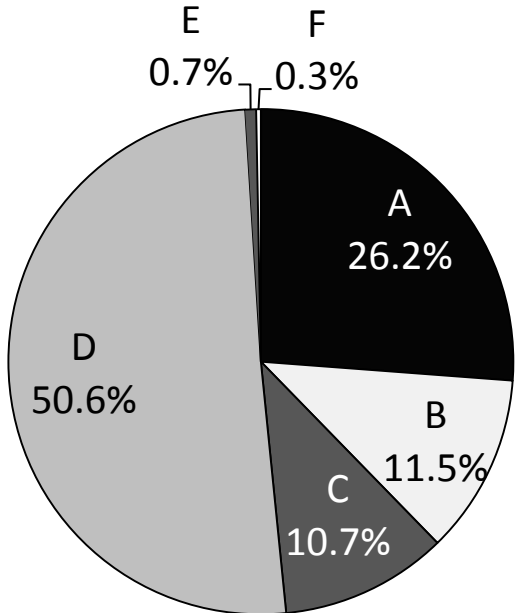
		Agree with A	Tend to Agree with A	Tend to Agree with B	Agree with B	Don't Know	No Response
Citizens	2014	23.5%	19.8%	20.6%	16.9%	19.1%	0.0%
	2013	15.1%	16.5%	28.8%	18.8%	20.7%	0.0%

The Korea Peninsula in 10 years

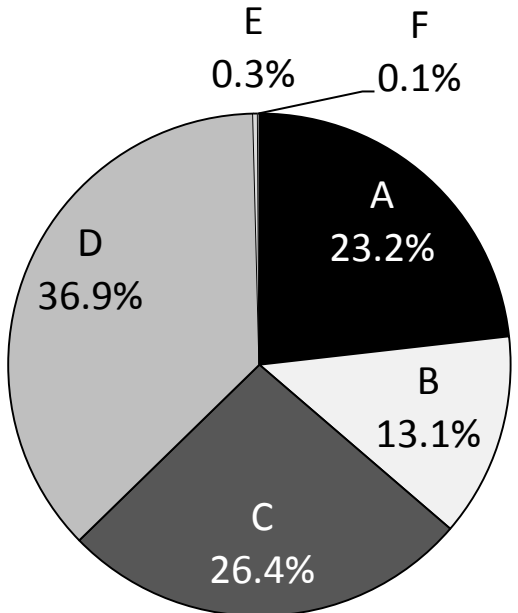
Q31. What do you predict the situation Korea Peninsula will be in 10 years? [Single Answer]

Japan (N = 1000)

South Korea (N = 1004)



- A** Will remain unchanged
- B** Confrontation between North and South Korea will intensify
- C** Movement toward reunification will start
- D** Cannot be predicted
- E** Others
- F** No Response



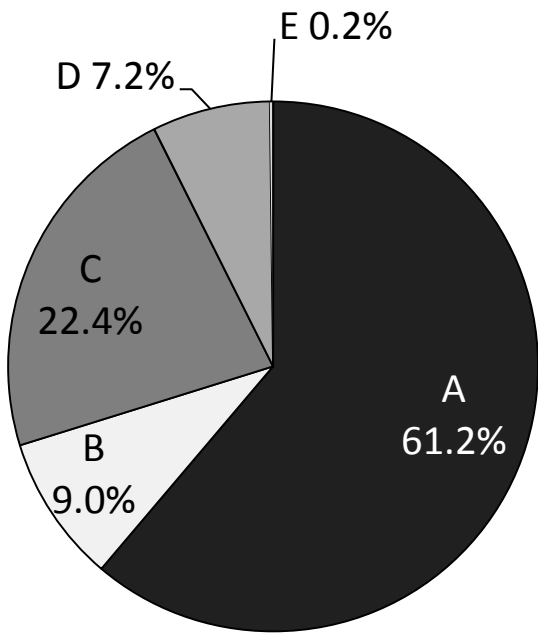
		Will remain unchanged	Confrontation between North and South Korea will intensify	Movement toward reunification will start	Cannot be predicted	Others	No Response
Citizens	2014	26.2%	11.5%	10.7%	50.6%	0.7%	0.3%
	2013	20.7%	20.4%	11.0%	47.1%	0.5%	0.3%
Intellectuals	2014	26.5%	8.2%	30.3%	30.8%	3.0%	1.1%
	2013	17.2%	9.2%	31.3%	31.0%	5.0%	6.3%

		Will remain unchanged	Confrontation between North and South Korea will intensify	Movement toward reunification will start	Cannot be predicted	Others	No Response
Citizens	2014	23.2%	13.1%	26.4%	36.9%	0.3%	0.1%
	2013	21.7%	15.4%	22.9%	39.8%	0.1%	0.0%
Intellectuals	2014	25.2%	4.2%	50.9%	16.7%	1.4%	1.4%
	2013	21.9%	5.6%	52.9%	17.0%	2.0%	0.5%

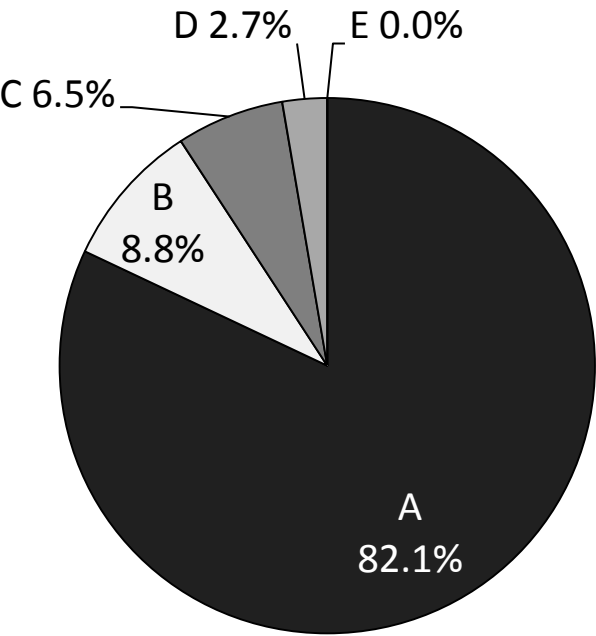
Territorial Dispute Between Japan and South Korea

Q33. Is There a Territorial Dispute Between Japan and South Korea? [Single Answer]

Japan (N = 1000)



South Korea (N = 1004)



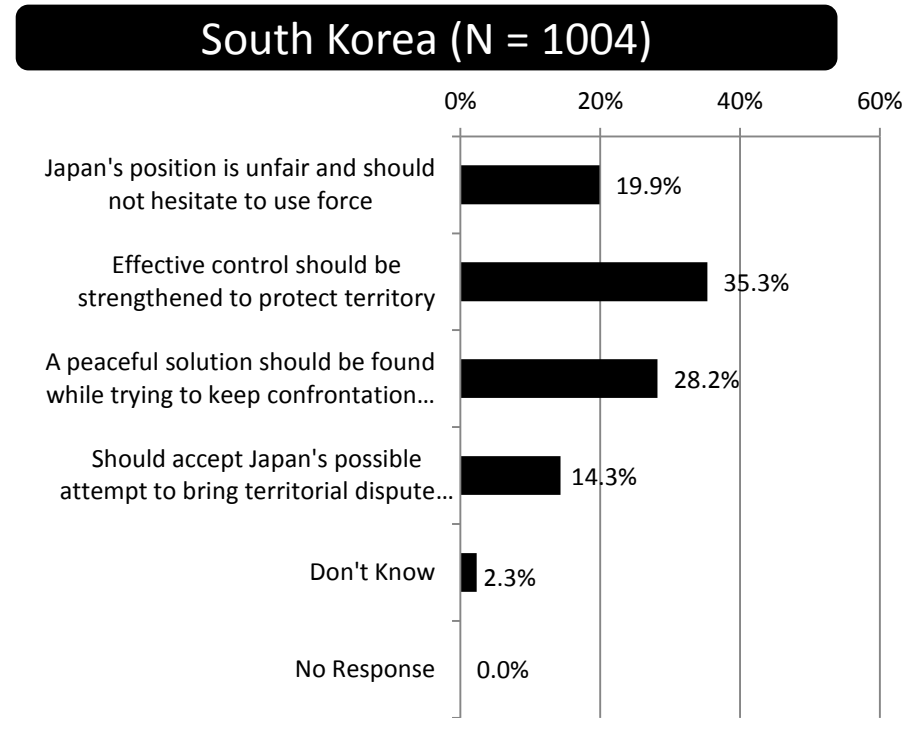
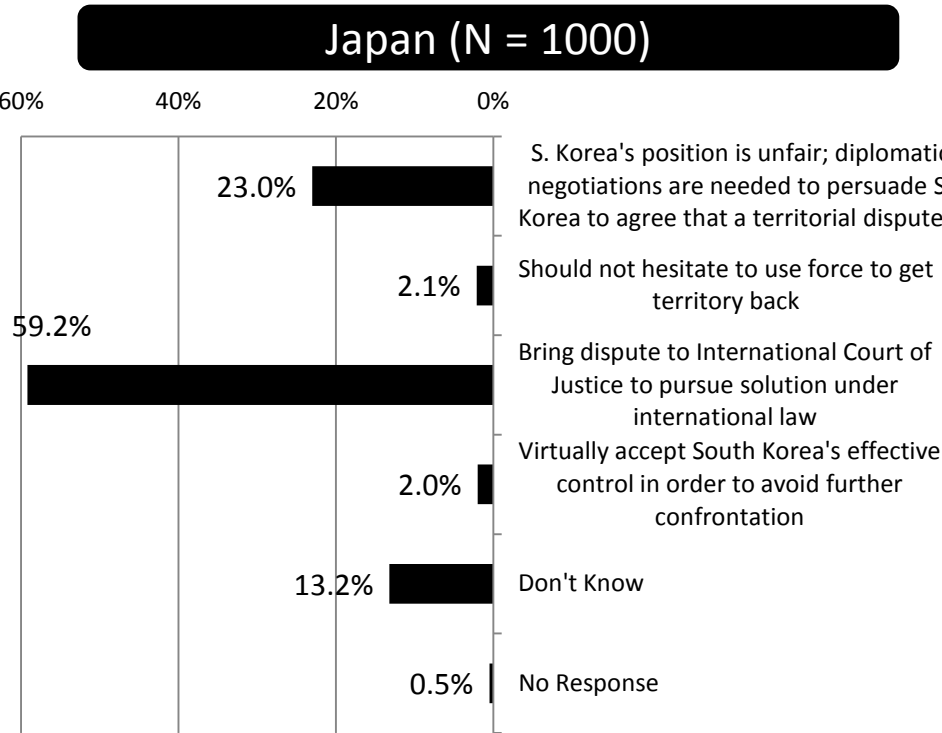
- A** Yes
- B** No
- C** Don't Know
- D** Not Interested
- E** No Response

		Yes	No	Don't Know	Not Interested	No Response
Citizens	2014	23.0%	2.1%	59.2%	13.2%	0.5%
	2013	22.0%	1.3%	60.7%	13.6%	0.1%
Intellectuals	2014	13.6%	2.8%	63.6%	8.0%	0.6%
	2013	10.0%	2.7%	58.0%	12.6%	0.4%

		Yes	No	Don't Know	Not Interested	No Response
Citizens	2014	82.1%	8.8%	6.5%	2.7%	0.0%
	2013	82.7%	6.0%	6.4%	3.2%	1.8%
Intellectuals	2014	70.8%	25.7%	1.4%	0.5%	1.7%
	2013	75.6%	22.9%	1.0%	0.0%	0.5%

Solutions to Resolve the Territorial Dispute

Q33-a. (Respondents who answered (A) in Q33) How do you think this issue should be resolved? [Single Answer]

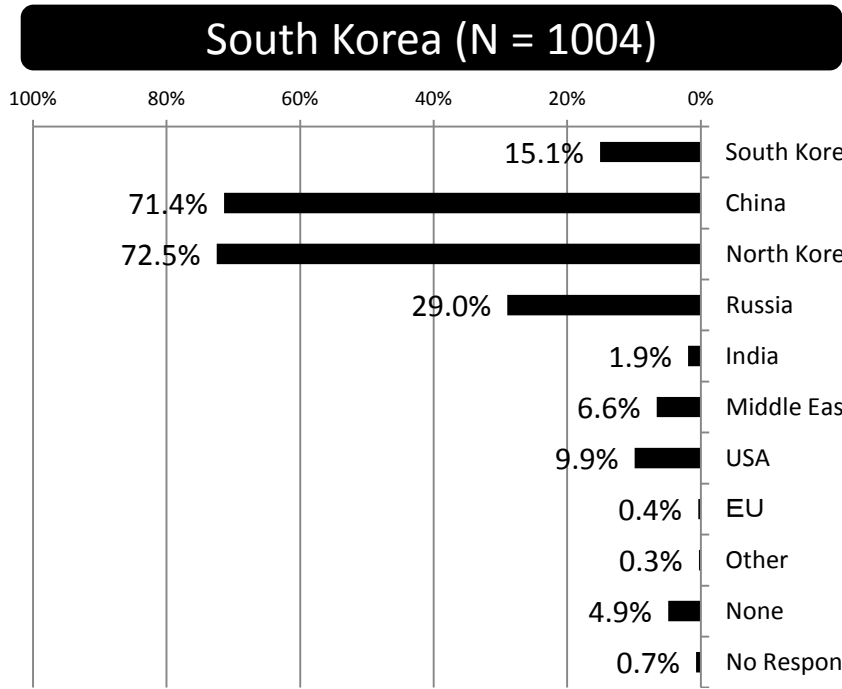
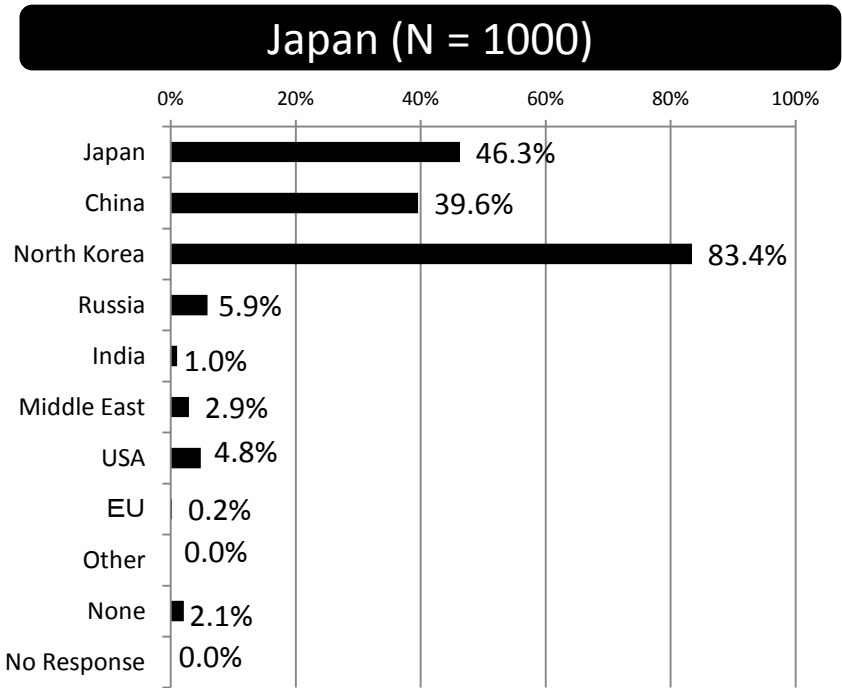


		S. Korea's position is unfair; diplomatic negotiations is necessary	Should not hesitate to use force	Bring dispute to International Court of Justice	Virtually accept South Korea's effective control	Don't Know	No Response
Citizens	2014	23.0%	2.1%	59.2%	2.0%	13.2%	0.5%
	2013	22.0%	1.3%	60.7%	2.3%	13.6%	0.1%
Intellectuals	2014	13.6%	2.8%	63.6%	11.4%	8.0%	0.6%
	2013	10.0%	2.7%	58.0%	16.4%	12.6%	0.4%

		Japan's position is unfair; diplomatic negotiations are needed	Should not hesitate to use force	Bring dispute to International Court of Justice	Virtually accept Japan's effective control	Don't Know	No Response
Citizens	2014	19.9%	35.3%	28.2%	14.3%	2.3%	0.0%
	2013	20.4%	37.7%	26.7%	15.1%	0.0%	0.1%
Intellectuals	2014	4.0%	56.7%	30.3%	7.3%	1.0%	0.7%
	2013	4.4%	57.6%	31.6%	4.4%	0.3%	1.7%

Countries/Areas Considered as Military Threats to Korea and Japan

Q35. Please identify up to two countries/areas you consider a military threat to Korea? [Japan: no limit; Korea: up to 2 answers]



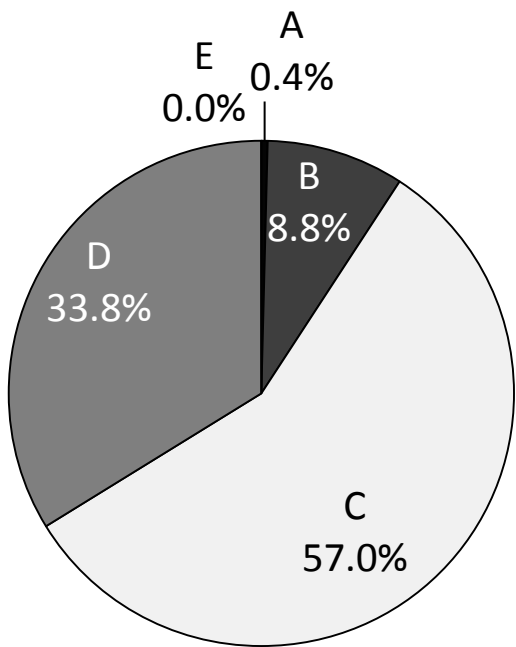
		S. Korea	China	N. Korea	Russia	India	Middle East	USA	EU	Other	None	No Response
Citizens	2014	15.1%	71.4%	72.5%	29.0%	1.9%	6.6%	9.9%	0.4%	0.3%	4.9%	0.7%
	2013	12.2%	60.1%	78.9%	19.0%	2.7%	7.9%	11.0%	1.1%	0.2%	3.9%	1.0%
Intellectuals	2014	8.8%	84.0%	69.7%	34.3%	1.6%	3.8%	8.2%	0.2%	1.4%	4.3%	1.3%

		S. Korea	China	N. Korea	Russia	India	Middle East	USA	EU	Other	None	No Response
Citizens	2014	46.3%	39.6%	83.4%	5.9%	1.0%	2.9%	4.8%	0.2%	0.0%	2.1%	0.0%
	2013	43.9%	47.8%	86.7%	4.3%	0.6%	1.6%	4.5%	0.1%	0.2%	1.0%	0.0%

Military Disputes between South Korea and Japan

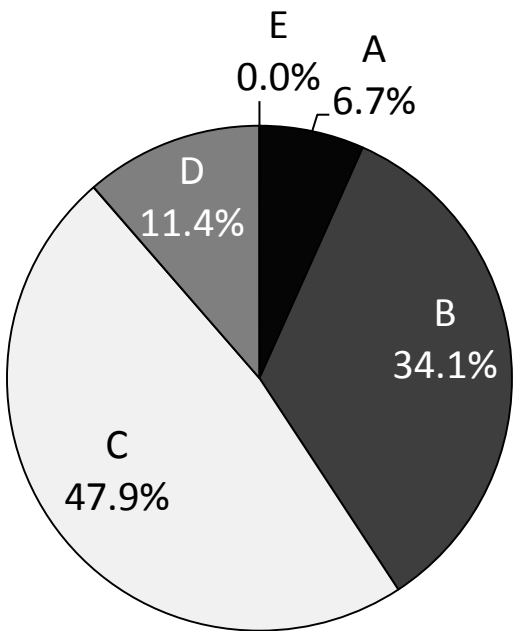
Q36. Do you think a military dispute will occur between Korea and Japan? [Single Answer]

Japan (N = 1000)



- A** Will occur within a few years
- B** Will occur in the future
- C** Will not occur
- D** Don't Know
- E** No Response

South Korea (N = 1004)



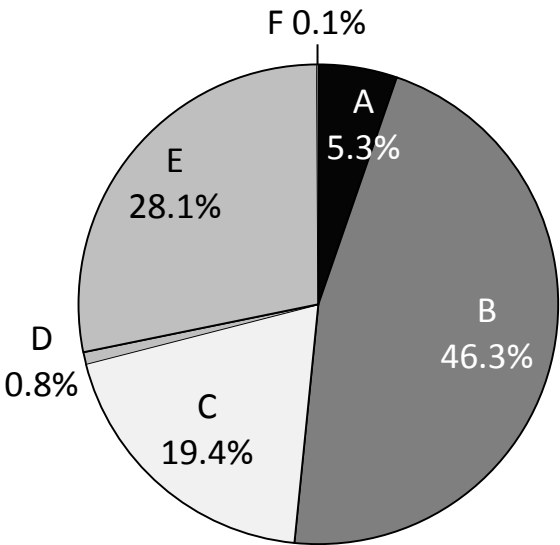
		Will occur within a few years	Will occur in the future	Will not occur	Don't Know	No Response
Citizens	2014	0.4%	8.8%	57.0%	33.8%	0.0%
Intellectuals	2014	0.9%	7.0%	81.5%	9.3%	1.3%

		Will occur within a few years	Will occur in the future	Will not occur	Don't Know	No Response
Citizens	2014	6.7%	34.1%	47.9%	11.4%	0.0%
Intellectuals	2014	9.7%	34.4%	50.5%	3.8%	1.7%

Freedom of Speech and Press in Japan and South Korea

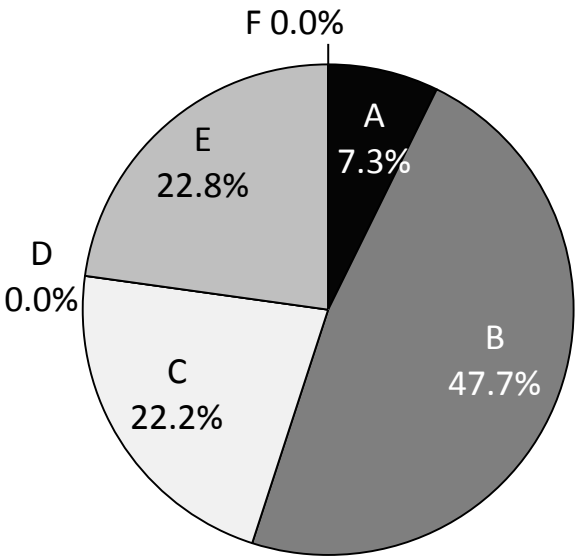
Q38. Is there freedom of speech and press in Japan/South Korea? [Single Answer]

Japan (N = 1000)



- A** Information is strictly controlled and there is no freedom of press and speech
- B** Freedom of press and speech is guaranteed to some extent, but it is effectively controlled
- C** There is freedom of press and speech with no control on information
- D** Other
- E** Don't Know
- F** No Response

South Korea (N = 1004)



- A** Information is strictly controlled and there is no freedom of press and speech
- B** Freedom of press and speech is guaranteed to some extent, but it is effectively controlled
- C** There is freedom of press and speech with no control on information
- D** Other
- E** Don't Know
- F** No Response

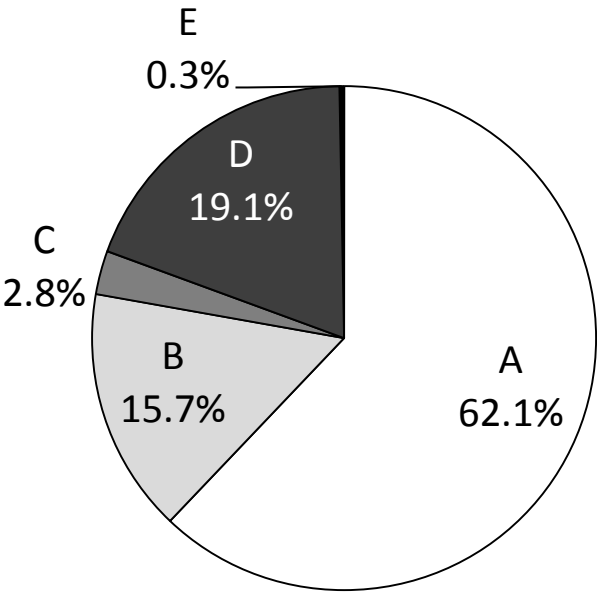
		Info is controlled and no freedom of press and speech in Japan	Some freedom of press and speech but controlled information in Japan	Freedom of press and speech and no control of information	Other	Don't Know	No Response
Citizens	2014	5.3%	46.3%	19.4%	0.8%	28.1%	0.1%
	2013	4.0%	45.1%	22.7%	0.3%	27.8%	0.1%
Intellectuals	2014	3.8%	44.1%	36.5%	5.8%	8.8%	0.9%

		Info is controlled and no freedom of press and speech in Japan	Some freedom of press and speech but controlled information in Japan	Freedom of press and speech and no control of information	Other	Don't Know	No Response
Citizens	2014	7.3%	47.7%	22.2%	0.0%	22.8 %	0.0%
	2013	8.3%	43.4%	45.9%	1.1%	0.2%	1.1%

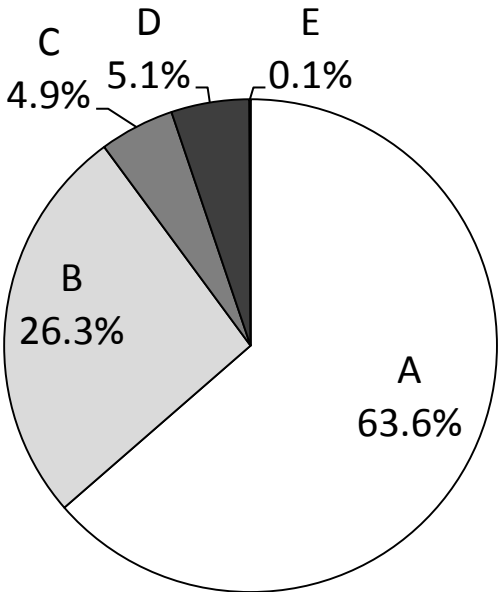
National Sentiment and Media Coverage

Q39. How influential do you think media coverage is on determining the national sentiment of Korea-Japan Relations? [Single Answer]

Japan (N = 1000)



South Korea (N = 1004)



- A Media coverage has profound influence on public opinion
- B Media coverage has influence on public opinion but it is nothing special
- C Media coverage has no influence on public opinion
- D Don't know
- E No response

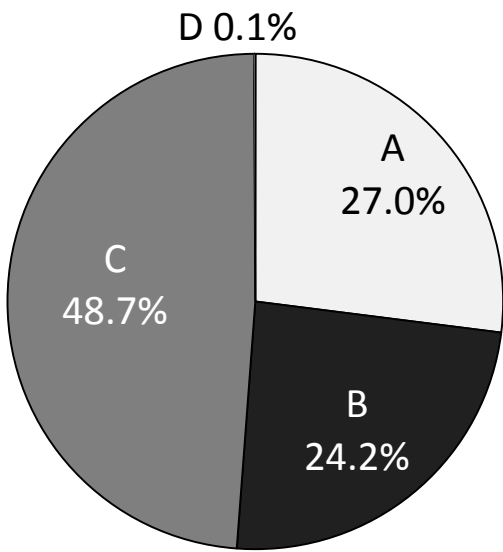
		Has profound influence	Has some influence	Has no influence	Don't Know	No Response
Citizens	2014	62.1%	15.7%	2.8%	19.1%	0.3%
Intellectuals	2014	83.3%	12.0%	0.9%	3.0%	0.8%

		Has profound influence	Has some influence	Has no influence	Don't Know	No Response
Citizens	2014	63.6%	26.3%	4.9%	5.1%	0.1%
Intellectuals	2014	77.6%	19.3%	0.7%	0.0%	2.4%

Objective and Impartial Media Coverage

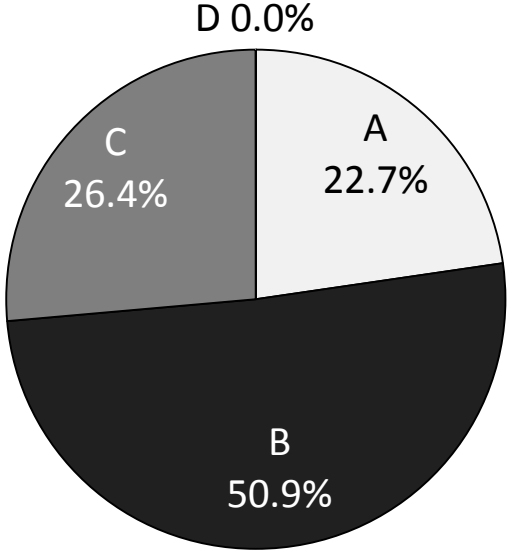
Q40. Are the media coverage on Korea-Japan relations in Korea objective and impartial? [Single Answer]

Japan (N = 1000)



- A Yes, I think so
- B No, I don't think so
- C Neither/Don't Know
- D No Response

South Korea (N = 1004)



		Yes, I think so	No, I don't think so	Neither/Don't Know	No Response
Citizens	2014	27.0%	24.2%	48.7%	0.1%
	2013	31.3%	26.2%	42.5%	0.0%
Intellectuals	2014	18.6%	55.3%	25.3%	0.8%
	2013	17.6%	51.7%	24.3%	6.4%

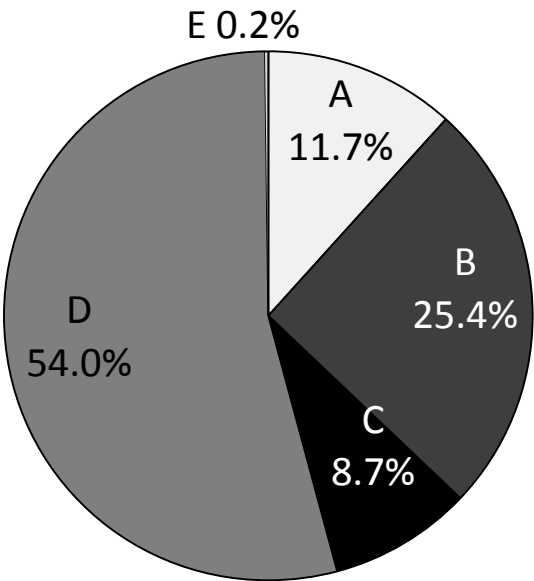
		Yes, I think so	No, I don't think so	Neither/Don't Know	No Response
Citizens	2014	22.7%	50.9%	26.4%	0.0%
	2013	33.0%	41.6%	25.4%	0.0%
Intellectuals	2014	19.1%	63.2%	16.0%	1.7%
	2013	29.5%	56.5%	14.0%	0.0%

Public Opinions on the Internet

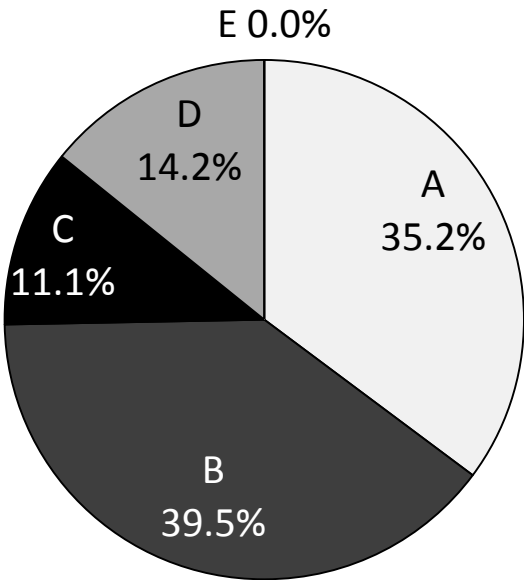
Q41. The internet shows significant Anti-Japan/Korea opinions. Do these opinions on the internet appropriately reflect peoples views in Japan and South Korea? [Single Answer]

Japan (N = 1000)

South Korea (N = 1004)



- A Think the Internet appropriately reflects public opinion
- B Think the Internet more or less reflects public opinion
- C Think the Internet does not appropriately reflect public opinion
- D Don't know
- E No response

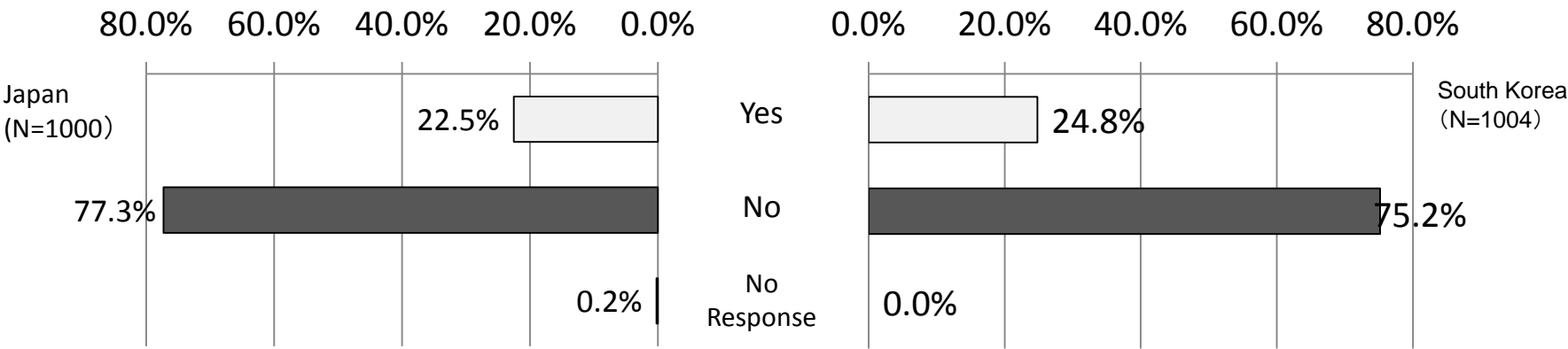


		Internet appropriately reflects public opinion	Internet more or less reflects public opinion	Internet does not appropriately reflect public opinion	Don't Know	No Response
Citizens	2014	11.7%	25.4%	8.7%	54.0%	0.2%
	2013	11.2%	30.6%	11.1%	46.9%	0.2%
Intellectuals	2014	12.3%	37.6%	37.9%	11.4%	0.8%

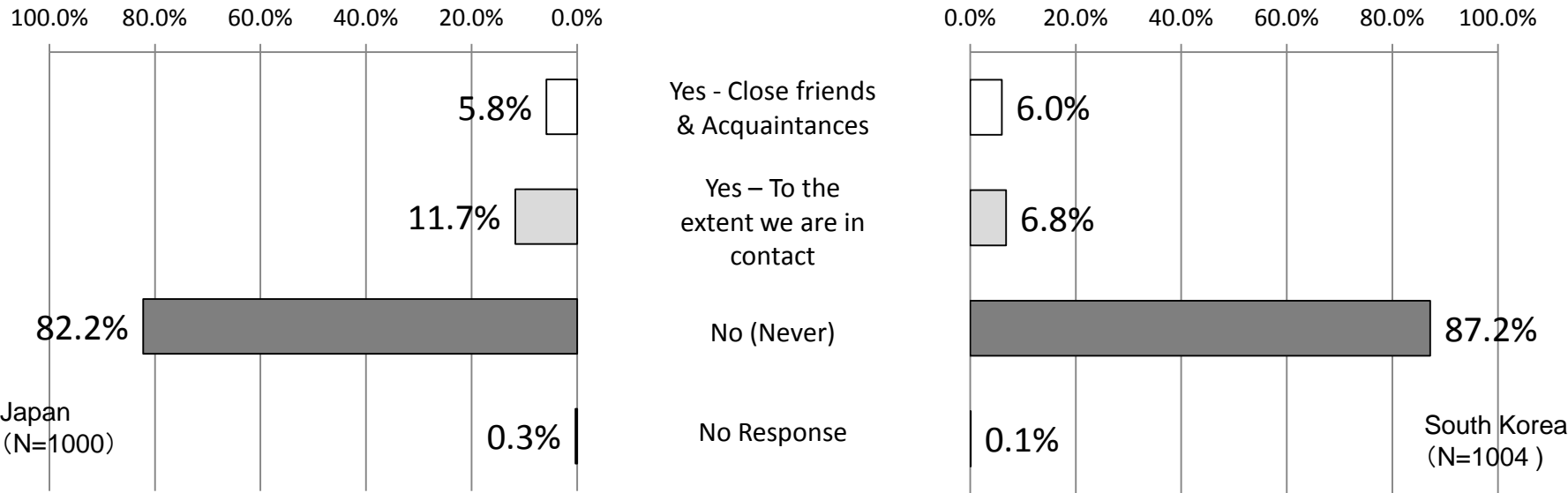
		Internet appropriately reflects public opinion	Internet more or less reflects public opinion	Internet does not appropriately reflect public opinion	Don't Know	No Response
Citizens	2014	35.2%	39.5%	11.1%	14.2%	0.0%
	2013	39.5%	38.2%	7.2%	14.8%	0.2%

Degree of Direct Interaction between Japanese and South Koreans

Q1. Have you ever visited Japan? [Single Answer]



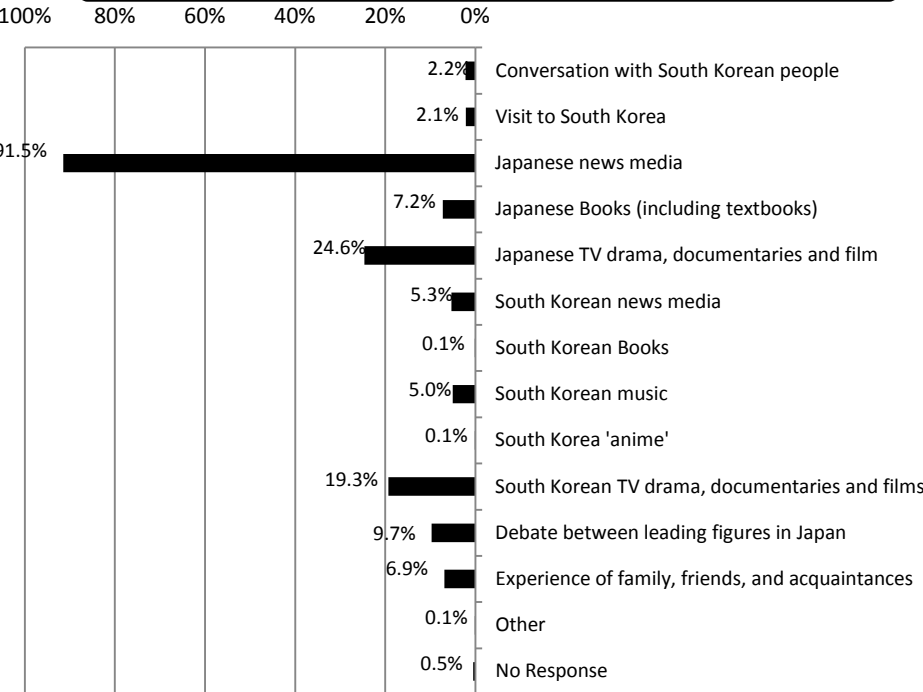
Q2. Do you have Acquaintances or Family in Japan?[Single Answer]



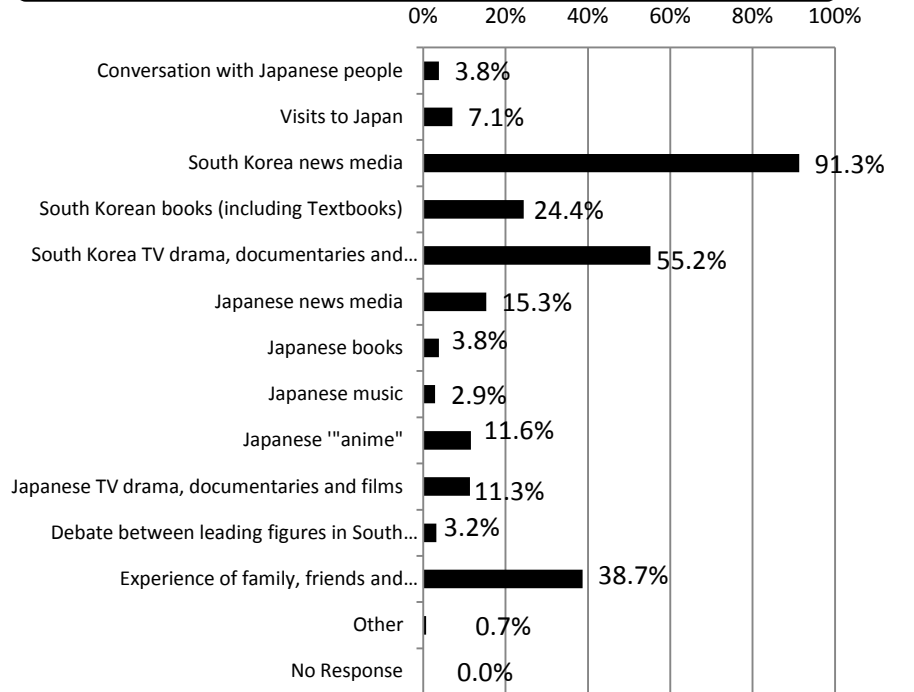
Interest in Information on One Another's Country and its Source of Information

Q4. What are the main sources you receive/obtain news on Korea-Japan Relations? [Max. 3 Answers]

Japan (N = 1000)



South Korea (N = 1004)



		Japan (N = 1000)												
		Conversation with South Korean	Visit to South Korea	Japanese news media	Japanese Books (including textbooks)	Japanese TV drama, documentaries and film	South Korean news media	South Korean Books	South Korean music	South Korea 'anime'	South Korean TV drama, documentaries and films	Debate between leading figures in Japan	Experience of family, friends, and acquaintances	Other
		2.2%	2.1%	91.5%	7.2%	24.6%	5.3%	0.1%	5.0%	0.1%	19.3%	9.7%	6.9%	0.1%
Citizens	2014	2.2%	2.1%	91.5%	7.2%	24.6%	5.3%	0.1%	5.0%	0.1%	19.3%	9.7%	6.9%	0.1%
	2013	3.8%	2.5%	91.2%	8.1%	28.6%	5.4%	0.1%	7.2%	0.1%	21.7%	-	8.6%	1.2%
Intellectuals	2014	22.9%	12.0%	81.4%	28.0%	12.3%	18.8%	0.9%	1.1%	0.0%	9.5%	25.9%	6.6%	3.9%

		South Korea (N = 1004)												
		Conversation with Japanese	Visit to Japan	South Korean news media	Korean TV drama, documentaries and film	Japanese news media	Japanese Books	Japanese music	Japanese 'anime'	Japanese TV drama, documentaries and films	Debate between leading figures in Korea	Experience of family, friends, and acquaintances	Other	No Response
		3.8%	7.1%	91.3%	24.4%	55.2%	15.3%	3.8%	2.9%	11.6%	3.2%	38.7%	0.7%	0.0%
Citizens	2014	3.8%	7.1%	91.3%	24.4%	55.2%	15.3%	3.8%	2.9%	11.6%	3.2%	38.7%	0.7%	0.0%
	2013	0.9%	5.9%	94.0%	12.6%	37.5%	5.8%	0.7%	1.6%	5.8%	3.8%	30.3%	1.3%	1.5%